

WARM SPRINGS PLAZA

46615-46635 MISSION BOULEVARD, FREMONT, CA 94539

RETAIL FOR LEASE



2099 Mt. Diablo Blvd., Suite 206
Walnut Creek, CA 94596
License #01784084

ADRIA GIACOMELLI
Partner
(925) 997-2307
adria@lockehouse.com
License #01498795

ABOUT WARM SPRINGS PLAZA

Warm Springs Plaza is an established ±147,000 SF community center anchored by 99 Ranch Market, CVS, Paris Baguette, Bank of the West and Orangetheory Fitness. Other regional and local tenants include Cauldron Ice Cream, Art Of Problem Solving, Code Ninjas, Starbucks, Chaat House, and Fremont Bank. Located on the highly trafficked highway 262 connector between I-680 and I-880 and just blocks from the Warm Springs Bart Station, the tenants at Warm Springs Plaza benefit from the visibility and exposure of over 90,522 cars per day, convenient access and strong demographics of the affluent community.

SUMMARY

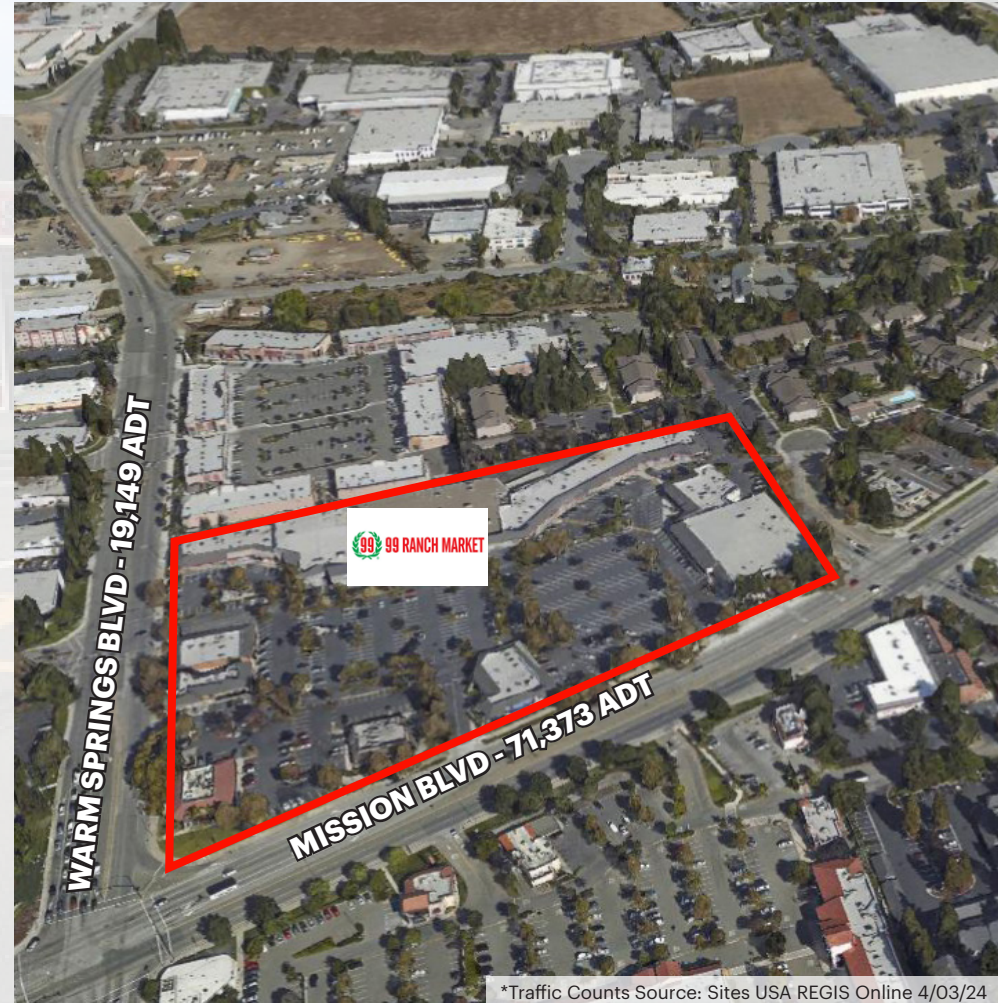
ADDRESS	46615-46635 Mission Boulevard, Fremont, CA 94539
CROSS STREETS	Mission Boulevard and Mohave Drive
AVAILABLE	±823 SF ±837 SF ±1,676 SF
RETAIL RENT	\$5.00 - 5.50 PSF Per Month
NNN	\$1.12 PSF Per Month (2024 Estimate)
SEEKING	Postal, Optometrist and Retail
ZONING	Town Center Transitional



Suite 630 Walk-Through Video: <https://youtu.be/Yp920zt46KI>
Suite 400-405 Walk-Through Video: https://www.youtube.com/watch?v=QcRJxfRzf_U

HIGHLIGHTS

- ±823 SF, ±837 SF and ±1,676 SF Retail Available
- Pylon Signage Available
- Blocks from Warm Springs BART Station
- 850 Parking Stalls, Equating to 7 Stalls per 1,000 SF
- Traffic Counts of 90,522 ADT at Mission Blvd. and Warm Springs Blvd.
- Frontage Boasting ±979 Linear Feet on Primary Commuter Route of Mission Blvd. & ±721 Linear Feet Fronting Warm Spring Blvd.



*Traffic Counts Source: Sites USA REGIS Online 4/03/24

46615-46635 Mission Boulevard, Fremont, CA 94539



2099 Mt. Diablo Blvd., Suite 206
Walnut Creek, CA 94596
License #01784084

ADRIA GIACOMELLI
Partner
(925) 997-2307
adria@lockehouse.com
License #01498795

SITE PLAN



100	Starbucks	±1,621
105	Subway Sandwiches	±967
110	Paris Baguette	±1,733
200	Spoon Korean Bistro	±1,197
210	Smoke Zone	±990
220	Curry Pizza House	±1,335
230/240	BMO	±3,290
300	Pink Pantherz Espresso	±192
400-405	AVAILABLE	±1,676
410	AT&T	±1,320
415	Arashi Japanese Ramen	±1,200
420	Home Eats Chinese	±4,267
500 - A/B	99 Ranch Market	±50,000
600	Sean's Barber Shop	±522
610	Prime Nails	±742
620	AVAILABLE 04/10/2024	±823
630	AVAILABLE	±837
640	R-Haan Thai	±1,475
650	Warm Springs Dental	±1,581
660	GumaGumalu South Indian Cuisine	±3,055
700	Mingle's Mango	±1,820
710	Code Ninjas	±1,170
720		±1,690
730	AoPS	±1,327
740		±3,650
750	Cauldron Ice Cream	±1,080
760	Orange Theory Fitness	±3,397
800	Vogue Beauty Lounge	±1,587
810	New Nilgiris Cash & Carry	±2,302
820	Chaat House	±3,600
840	Rose Tea	±1,882
1000	East West Bank	±5,092
1020	The Donut House	±910
1030	Fremont Bank	±2,410
1100	Available 09/2025 In Lease negotiations	±4,003
1200	Chase	±5,833

*Traffic Counts Source: Sites USA REGIS Online 4/03/24

46615-46635 Mission Boulevard, Fremont, CA 94539




LOCKEHOUSE

2099 Mt. Diablo Blvd., Suite 206
Walnut Creek, CA 94596
License #01784084

ADRIA GIACOMELLI
Partner
(925) 997-2307
adria@lockehouse.com
License #01498795

AVAILABLE SPACE

ADDRESS	46583 Mission Boulevard, Fremont, CA 94539
SUITE	400-405 on Site Plan
SIZE	±1,676 SF
RENT	\$5.00 PSF Per Month + NNN
AVAILABLE	Now
PROPERTY HIGHLIGHTS	<ul style="list-style-type: none">• Former Jamba Juice• Walk-in Refrigerators, Rear Door Access

 https://www.youtube.com/watch?v=QcRjxfRzf_U



46615-46635 Mission Boulevard, Fremont, CA 94539



2099 Mt. Diablo Blvd., Suite 206
Walnut Creek, CA 94596
License #01784084

ADRIA GIACOMELLI
Partner
(925) 997-2307
adria@lockehouse.com
License #01498795

AVAILABLE SPACE

ADDRESS	46539 Mission Boulevard, Fremont, CA 94539
SUITE	620 on Site Plan
SIZE	±823 SF
RENT	\$5.00 PSF Per Month + NNN
AVAILABLE	April 10th, 2024
PROPERTY HIGHLIGHTS	<ul style="list-style-type: none">• Existing Hair Salon• Plumbing Infrastructure in Place• Can be Combined with Adjacent Space



46615-46635 Mission Boulevard, Fremont, CA 94539



2099 Mt. Diablo Blvd., Suite 206
Walnut Creek, CA 94596
License #01784084

ADRIA GIACOMELLI
Partner
(925) 997-2307
adria@lockehouse.com
License #01498795

AVAILABLE SPACE

ADDRESS	46537 Mission Boulevard, Fremont, CA 94539
SUITE	630 on Site Plan
SIZE	±837 SF
RENT	\$5.00 PSF Per Month + NNN
AVAILABLE	Now
PROPERTY HIGHLIGHTS	<ul style="list-style-type: none">• Formerly Yomie's Rice and Yogurt• Includes 1 Restroom• Can be Combined with Adjacent Space



<https://youtu.be/Yp920zt46KI>



46615-46635 Mission Boulevard, Fremont, CA 94539



2099 Mt. Diablo Blvd., Suite 206
Walnut Creek, CA 94596
License #01784084

ADRIA GIACOMELLI
Partner
(925) 997-2307
adria@lockehouse.com
License #01498795

AERIAL VIEW OF FREMONT



*Traffic Counts Source: Sites USA REGIS Online 4/03/24

46615-46635 Mission Boulevard, Fremont, CA 94539



2099 Mt. Diablo Blvd., Suite 206
Walnut Creek, CA 94596
License #01784084

ADRIA GIACOMELLI
Partner
(925) 997-2307
adria@lockhouse.com
License #01498795



WARM SPRINGS PLAZA - FREMONT, CA

The city of Fremont is the fourth largest city in the San Francisco Bay Area, home to approximately 178,483 residents. Located conveniently near Interstates 680 and 880, Fremont is near passenger rail services including Altamont Commuter Express (ACE), Amtrak Capitol Corridor, and the new Warm Springs Bay Area Rapid Transit (BART) system. There are over 1,200 innovative firms as well as a broad range of great business locations and a superior workforce.

ADDITIONAL INFORMATION

Warm Springs Plaza Center: <http://www.warmspringsplaza.com>



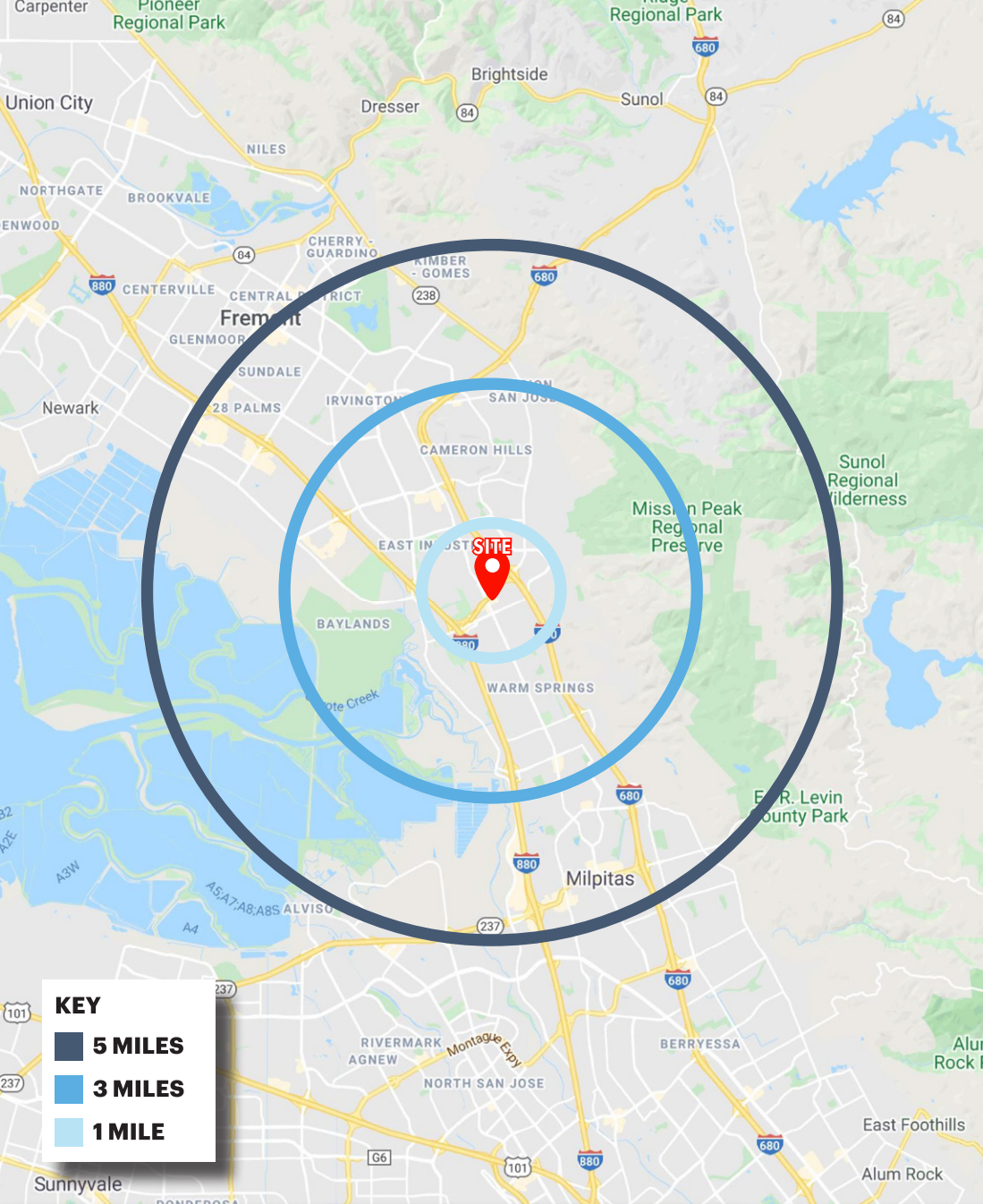
*Traffic Counts Source: Sites USA REGIS Online 4/03/24

46615-46635 Mission Boulevard, Fremont, CA 94539



2099 Mt. Diablo Blvd., Suite 206
Walnut Creek, CA 94596
License #01784084

ADRIA GIACOMELLI
Partner
(925) 997-2307
adria@lockehouse.com
License #01498795



KEY

- 5 MILES
- 3 MILES
- 1 MILE

DEMOGRAPHICS

ESTIMATED POPULATION

1 MILE	3 MILES	5 MILES
10,163	62,173	165,706



DAYTIME EMPLOYEES

1 MILE	3 MILES	5 MILES
15,452	83,519	168,704



AVERAGE HOUSEHOLD INCOME

1 MILE	3 MILES	5 MILES
\$202,825	\$243,336	\$222,766



BACHELOR'S DEGREE OR HIGHER

1 MILE	3 MILES	5 MILES
72.2%	64.0%	59.4%



HOUSEHOLD RETAIL EXPENDITURES

1 MILE	3 MILES	5 MILES
\$214.32 M	\$1.28 B	\$3.27 B



HOUSEHOLD DENSITY (PSM)

1 MILE	3 MILES	5 MILES
3,823	19,457	53,813



HOUSEHOLDS WITH CHILDREN

1 MILE	3 MILES	5 MILES
22.7%	49.5%	45.9%



HOME VALUES \$1,000,000 OR MORE

1 MILE	3 MILES	5 MILES
70.5%	70.7%	60.9%



*Demographics Source: Sites USA REGIS Online 4/03/24

46615-46635 Mission Boulevard, Fremont, CA 94539

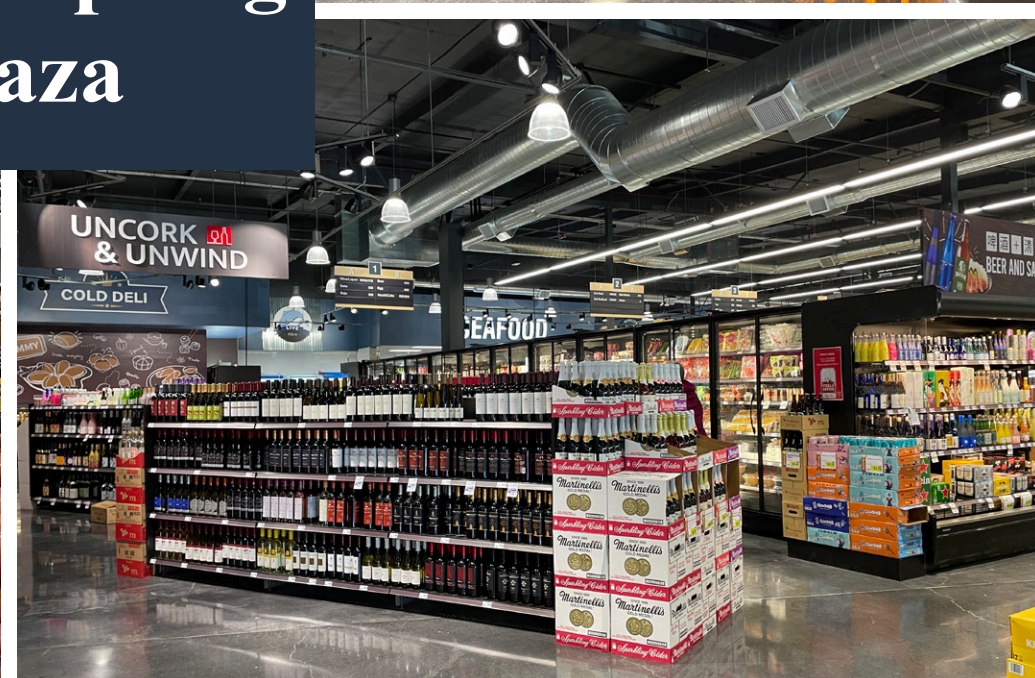


2099 Mt. Diablo Blvd., Suite 206
Walnut Creek, CA 94596
License #01784084

ADRIA GIACOMELLI
Partner
(925) 997-2307
adria@lockehouse.com
License #01498795



Warm Spring Plaza



46615-46635 Mission Boulevard, Fremont, CA 94539



2099 Mt. Diablo Blvd., Suite 206
Walnut Creek, CA 94596
License #01784084

ADRIA GIACOMELLI
Partner
(925) 997-2307
adria@lockehouse.com
License #01498795