

# FOR LEASE

± 1,300 - 3,982 SF | Retail

Thousand Oaks Marketplace | 520 N. Ventu Park Rd., Thousand Oaks, CA 91320



**LOCKEHOUSE**

616 E. Cota Street, Santa Barbara, CA 93103 | License #01784084



A MEMBER OF  
**CHAINLINKS**  
RETAIL ADVISORS

**MIKE HIESHIMA** | [mike@lockehouse.com](mailto:mike@lockehouse.com) | License #00994298  
**NATALIE V. WAGNER** | [natalie@lockehouse.com](mailto:natalie@lockehouse.com) | License #01868161  
**JUSTIN ROMAIN** | [justin@lockehouse.com](mailto:justin@lockehouse.com) | License #02001714  
**CONTACT US (805) 684-7767**



## SUMMARY

<b>ADDRESS</b>	520 N. Ventu Park Road, Thousand Oaks, CA
<b>CROSS STREETS</b>	Highway 101 @ West Hillcrest Drive
<b>AVAILABLE</b>	<b>Suite 190:</b> ±1,300 SF <b>Suite 200:</b> ±2,682 SF (Suites Can be Combined to Create up to ±3,982 SF)
<b>PARKING</b>	Ample
<b>ASKING RENTS</b>	Contact Brokers
<b>NNN</b>	Est. \$1.25/SF
<b>TERM</b>	Negotiable
<b>AVAILABLE</b>	Now

## HIGHLIGHTS

- Anchored by Walmart Neighborhood Market, Walgreens, Starbucks, Chase Bank, and More
- Over 54,099 Daytime Population within 3 Miles
- Less than 1 Mile from Amgen Campus
- US Highway 101 Visibility with Exposure to over 184,812 Cars per Day
- \$50 Million of Daily Needs Sales at Intersection
- New Construction Grocery Anchored Center



**LOCKEHOUSE**

616 E. Cota Street, Santa Barbara, CA 93103 | License #01784084



A MEMBER OF  
**CHAINLINKS**  
RETAIL ADVISORS

**MIKE HIESHIMA** | [mike@lockehouse.com](mailto:mike@lockehouse.com) | License #00994298

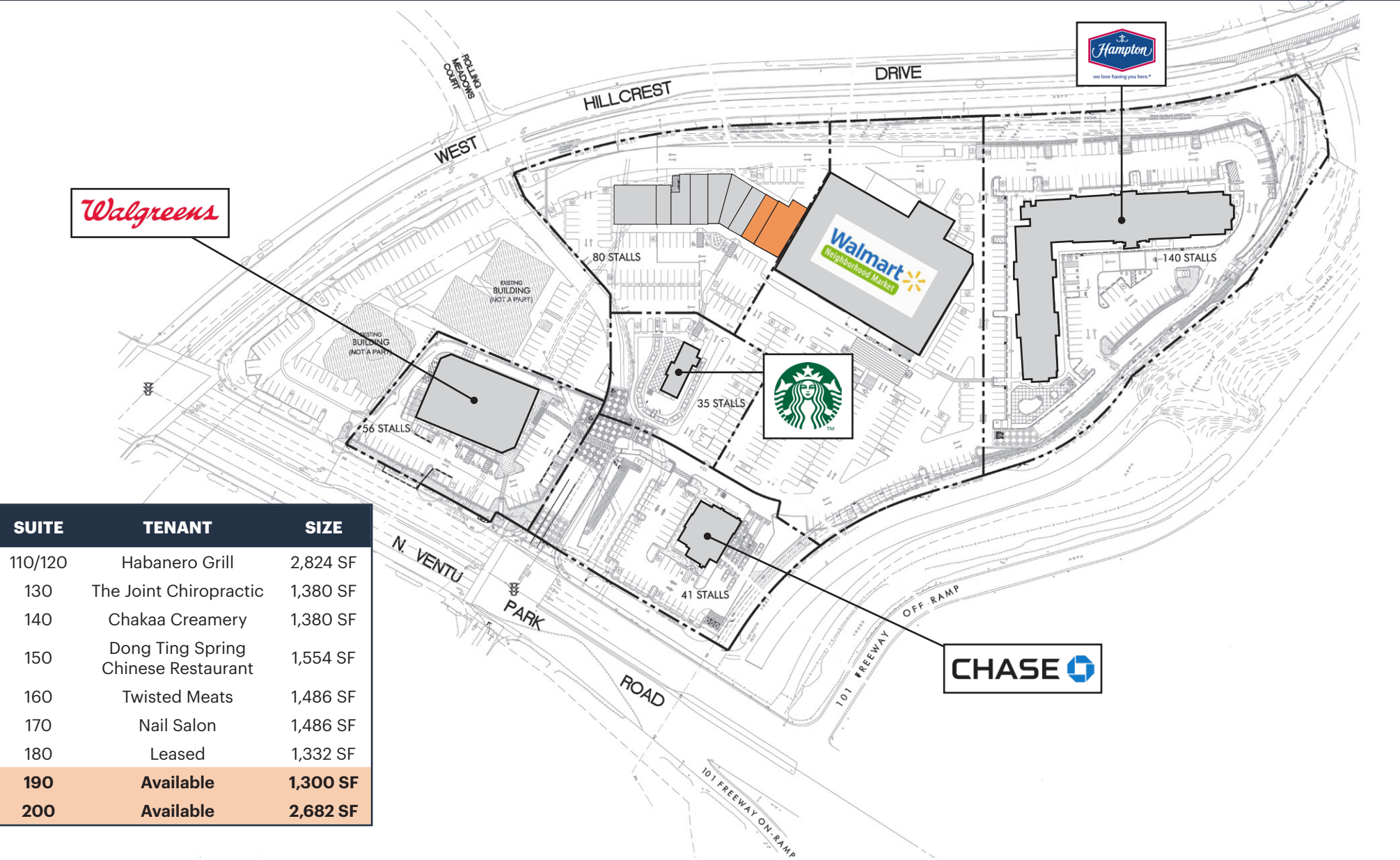
**NATALIE V. WAGNER** | [natalie@lockehouse.com](mailto:natalie@lockehouse.com) | License #01868161

**JUSTIN ROMAIN** | [justin@lockehouse.com](mailto:justin@lockehouse.com) | License #02001714

**CONTACT US (805) 684-7767**

The information contained herein has been obtained from sources that have been deemed reliable. While we have no reason to doubt its accuracy we do not guarantee it.





SUITE	TENANT	SIZE
110/120	Habanero Grill	2,824 SF
130	The Joint Chiropractic	1,380 SF
140	Chakaa Creamery	1,380 SF
150	Dong Ting Spring Chinese Restaurant	1,554 SF
160	Twisted Meats	1,486 SF
170	Nail Salon	1,486 SF
180	Leased	1,332 SF
190	Available	1,300 SF
200	Available	2,682 SF



LOCKEHOUSE

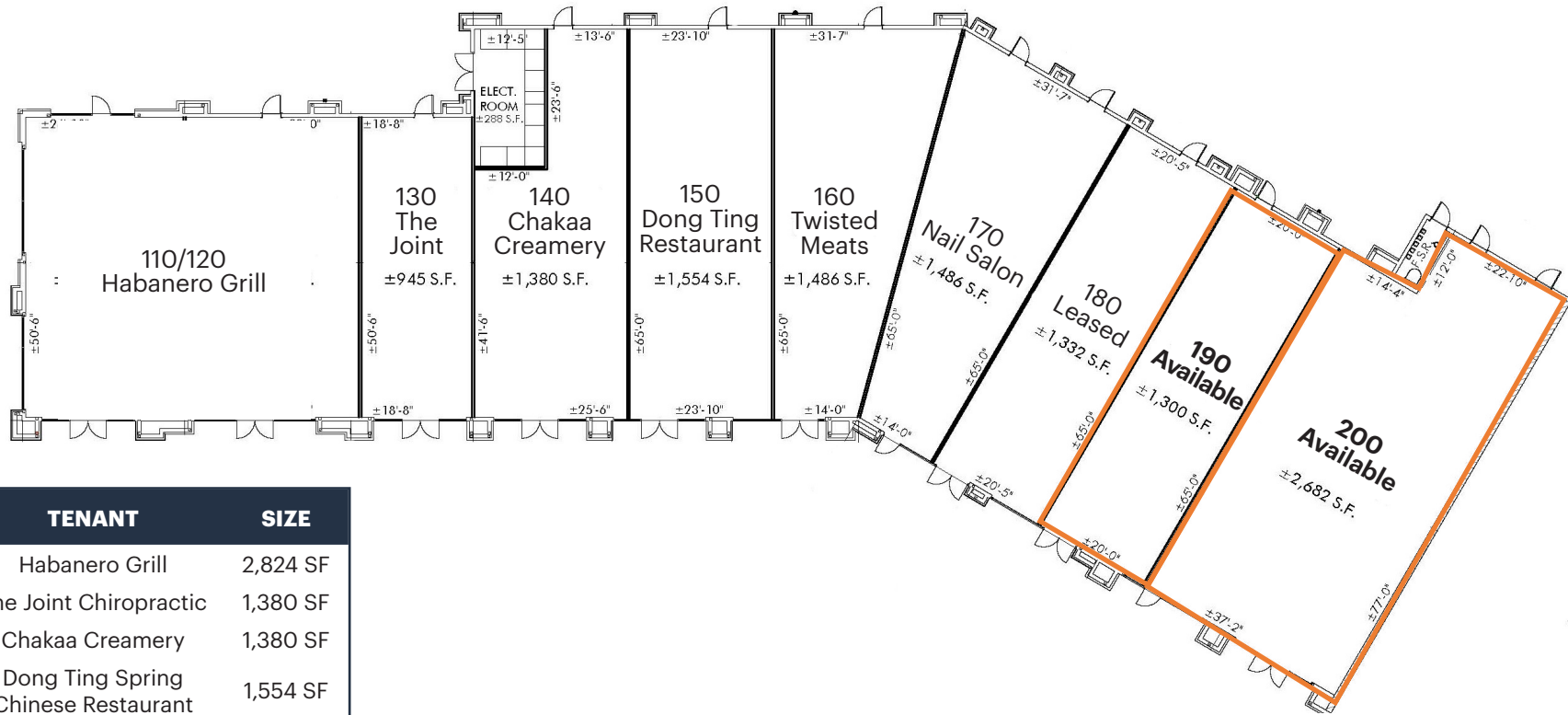
616 E. Cota Street, Santa Barbara, CA 93103 | License #01784084



A MEMBER OF  
CHAINLINKS  
RETAIL ADVISORS

MIKE HIESHIMA | [mike@lockehouse.com](mailto:mike@lockehouse.com) | License #00994298  
NATALIE V. WAGNER | [natalie@lockehouse.com](mailto:natalie@lockehouse.com) | License #01868161  
JUSTIN ROMAIN | [justin@lockehouse.com](mailto:justin@lockehouse.com) | License #02001714  
CONTACT US (805) 684-7767

The information contained herein has been obtained from sources that have been deemed reliable. While we have no reason to doubt its accuracy we do not guarantee it.



SUITE	TENANT	SIZE
110/120	Habanero Grill	2,824 SF
130	The Joint Chiropractic	1,380 SF
140	Chakaa Creamery	1,380 SF
150	Dong Ting Spring Chinese Restaurant	1,554 SF
160	Twisted Meats	1,486 SF
170	Nail Salon	1,486 SF
180	Leased	1,332 SF
<b>190</b>	<b>Available</b>	<b>1,300 SF</b>
<b>200</b>	<b>Available</b>	<b>2,682 SF</b>



**LOCKEHOUSE**

616 E. Cota Street, Santa Barbara, CA 93103 | License #01784084



A MEMBER OF  
**CHAINLINKS**  
RETAIL ADVISORS

**MIKE HIESHIMA** | mike@lockehouse.com | License #00994298  
**NATALIE V. WAGNER** | natalie@lockehouse.com | License #01868161  
**JUSTIN ROMAIN** | justin@lockehouse.com | License #02001714  
**CONTACT US (805) 684-7767**

The information contained herein has been obtained from sources that have been deemed reliable. While we have no reason to doubt its accuracy we do not guarantee it.





SUITES 190 & 200 - EXTERIOR



SUITE 200 (±2,682 SF) - INTERIOR

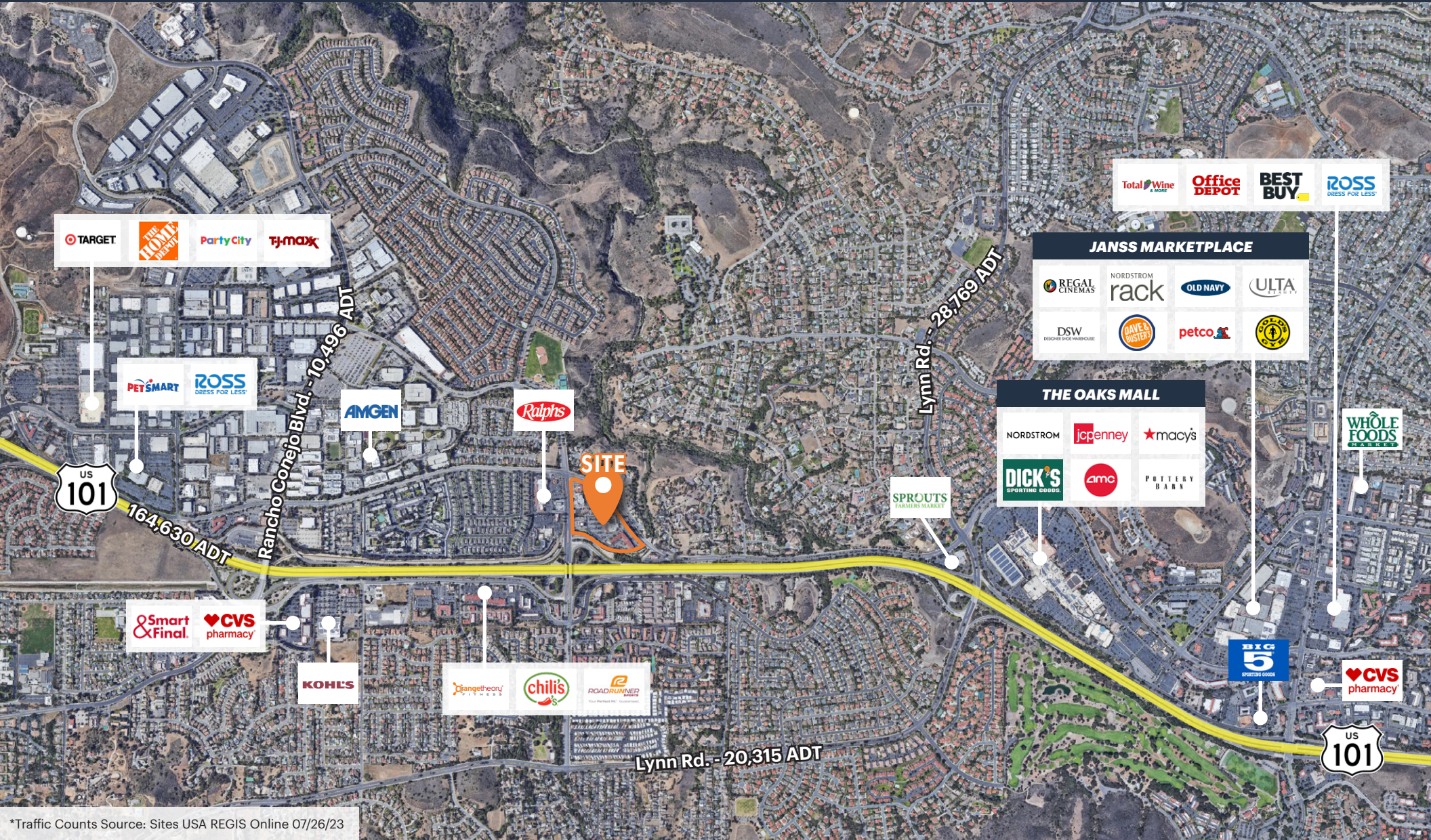


STARBUCKS



WALMART NEIGHBORHOOD MARKET





**LOCKEHOUSE**

616 E. Cota Street, Santa Barbara, CA 93103 | License #01784084



A MEMBER OF  
**CHAIN LINKS**  
RETAIL ADVISORS

**MIKE HIESHIMA** | [mike@lockehouse.com](mailto:mike@lockehouse.com) | License #00994298  
**NATALIE V. WAGNER** | [natalie@lockehouse.com](mailto:natalie@lockehouse.com) | License #01868161  
**JUSTIN ROMAIN** | [justin@lockehouse.com](mailto:justin@lockehouse.com) | License #02001714  
**CONTACT US (805) 684-7767**

The information contained herein has been obtained from sources that have been deemed reliable. While we have no reason to doubt its accuracy we do not guarantee it.





## LOCKEHOUSE

616 E. Cota Street, Santa Barbara, CA 93103 | License #01784084

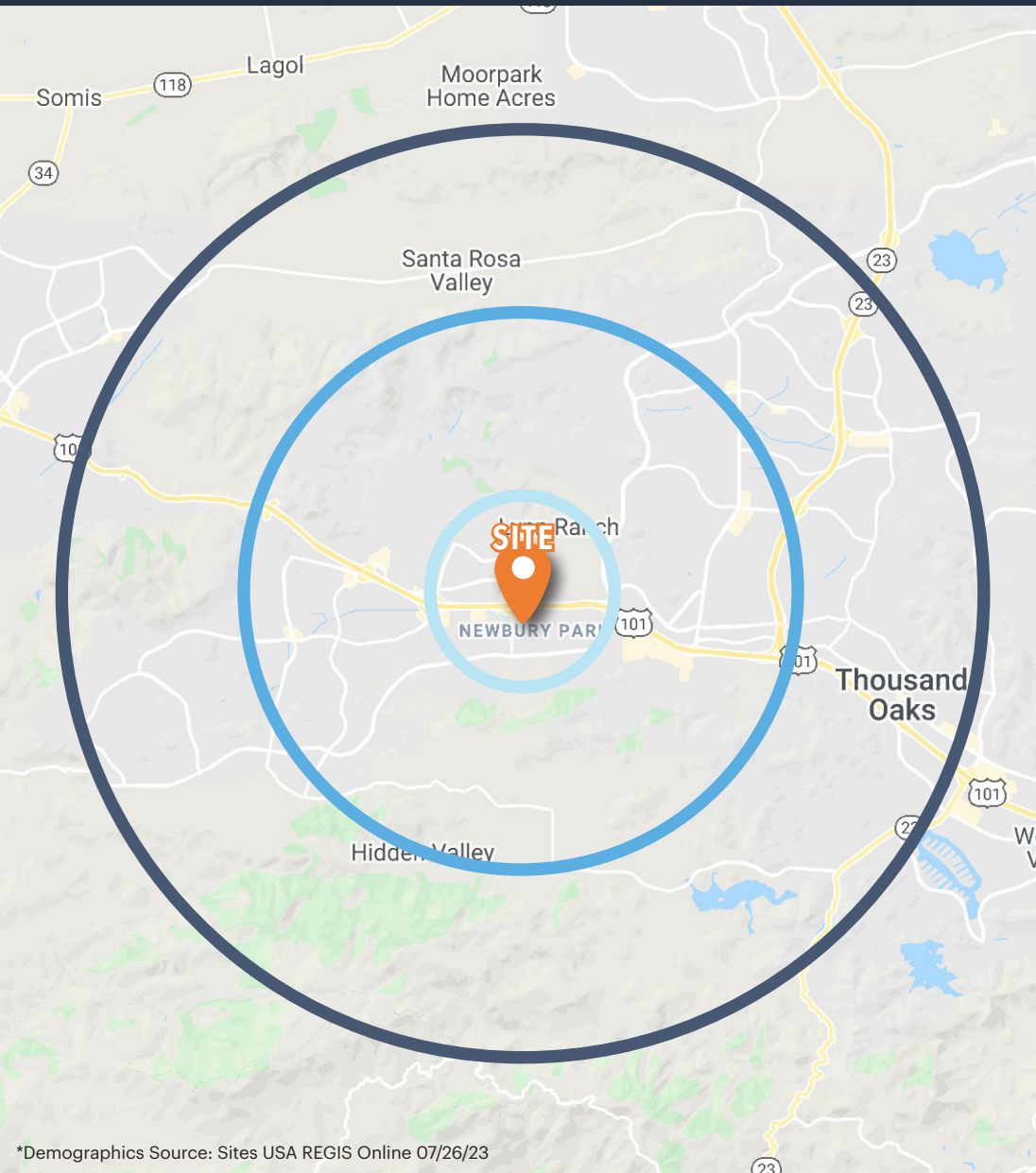


A MEMBER OF  
**CHAINLINKS**  
RETAIL ADVISORS

**MIKE HIESHIMA** | [mike@lockehouse.com](mailto:mike@lockehouse.com) | License #00994298  
**NATALIE V. WAGNER** | [natalie@lockehouse.com](mailto:natalie@lockehouse.com) | License #01868161  
**JUSTIN ROMAIN** | [justin@lockehouse.com](mailto:justin@lockehouse.com) | License #02001714  
**CONTACT US (805) 684-7767**

The information contained herein has been obtained from sources that have been deemed reliable. While we have no reason to doubt its accuracy we do not guarantee it.





## ESTIMATED POPULATION

1 MILE	3 MILES	5 MILES
15,003	62,857	124,534



## DAYTIME EMPLOYEES

1 MILE	3 MILES	5 MILES
3,721	34,294	56,917



## AVERAGE HOUSEHOLD INCOME

1 MILE	3 MILES	5 MILES
\$163,266	\$162,663	\$183,847



## BACHELOR'S DEGREE OR HIGHER

1 MILE	3 MILES	5 MILES
49.2%	46.2%	48.2%



## HOUSEHOLD RETAIL EXPENDITURES

1 MILE	3 MILES	5 MILES
\$257.78 M	\$1.07 B	\$2.39 B



## HOUSEHOLD DENSITY PSM

1 MILE	3 MILES	5 MILES
1,741	806	586



## HOUSEHOLDS WITH CHILDREN

1 MILE	3 MILES	5 MILES
36.3%	33.3%	33.3%



## HOME VALUES OVER 1 MILLION

1 MILE	3 MILES	5 MILES
15.1%	14.8%	24.2%



\*Demographics Source: Sites USA REGIS Online 07/26/23



**LOCKEHOUSE**

616 E. Cota Street, Santa Barbara, CA 93103 | License #01784084



A MEMBER OF  
**CHAINLINKS**  
RETAIL ADVISORS

**MIKE HIESHIMA** | mike@lockehouse.com | License #00994298

**NATALIE V. WAGNER** | natalie@lockehouse.com | License #01868161

**JUSTIN ROMAIN** | justin@lockehouse.com | License #02001714

**CONTACT US (805) 684-7767**

The information contained herein has been obtained from sources that have been deemed reliable. While we have no reason to doubt its accuracy we do not guarantee it.