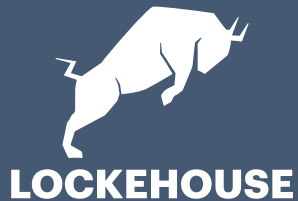


# DIAMOND HEIGHTS

5214 DIAMOND HEIGHTS BLVD., SAN FRANCISCO, CA 94131



**JIM SHEPHERD**  
(925) 627-7902  
jim@lockehouse.com  
License #01260555

**BRENDAN WALSH**  
(925) 627-4272  
brendan@lockehouse.com  
License #02140273

**CHRIS HOMS**  
(650) 548-2687  
chris@lockehouse.com  
License #01901922





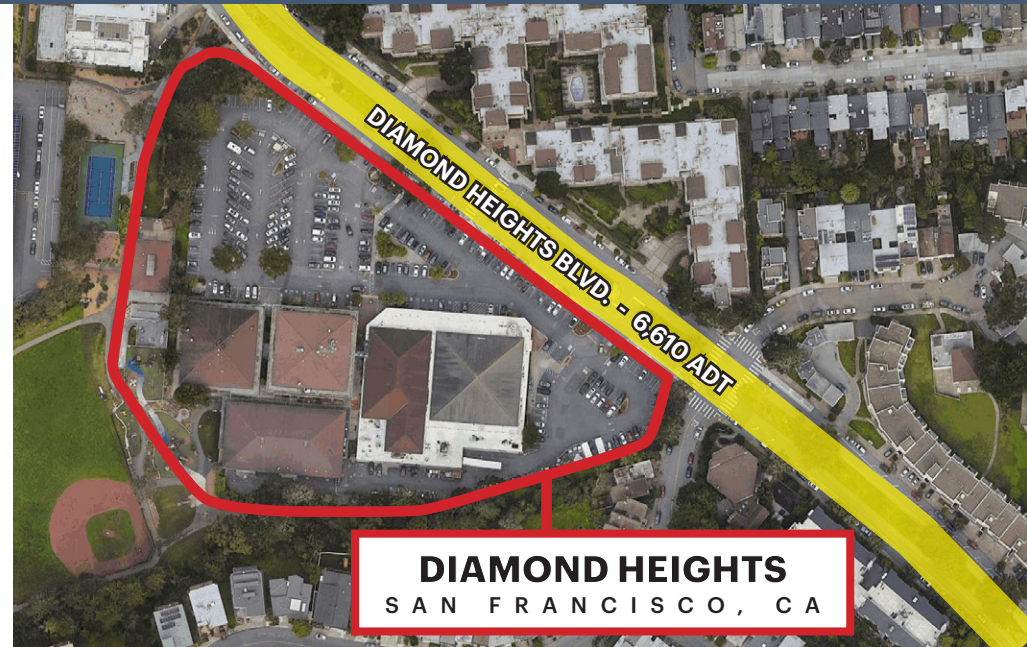
**DIAMOND HEIGHTS SHOPPING CENTER** is conveniently located at the southwest corner of Diamond Heights Blvd. and Gold Mine Dr. This neighborhood shopping center is anchored by Safeway and Walgreens with a spacious parking lot, adjacent to Glen Canyon Park.

## SUMMARY

<b>ADDRESS</b>	5214 Diamond Heights Blvd., San Francisco 94131
<b>GLA</b>	±74,403 SF
<b>AVAILABLE</b>	±8,262 SF
<b>TRAFFIC COUNTS</b>	Diamond Heights Blvd. - 6,610 ADT
<b>SEEKING</b>	Retail, Restaurant, Medical Office, Fitness, and Office

## HIGHLIGHTS

- Grocery Anchored Center
- High Income & Education Levels, Dense Population
- Centrally Located in San Francisco
- Ample On-Site Parking





## AVAILABLE SPACES

<b>C5</b>	1,353 SF
<b>C8</b>	688 SF (Available 3/1/24)
<b>D1</b>	4,531 SF
<b>E</b>	8,262 SF
<b>Kiosk</b>	150 SF

## CURRENT RETAILERS

<b>A</b>	Safeway	35,853 SF
<b>B</b>	Walgreens	11,882 SF
<b>C1</b>	Creighton's Bakery & Cafe	1,820 SF
<b>C2</b>	Kumon Learning Center	1,300 SF
<b>C3</b>	Great Clips	780 SF
<b>C4</b>	Au Sushi	1,000 SF
<b>C6</b>	Jensen's Mail & Copy	860 SF
<b>C7</b>	State Farm Insurance	586 SF
<b>D2</b>	Seven Hills Veterinary	1,560 SF
<b>D3</b>	US Post Office	4,337 SF
<b>TOTAL GLA FOOTAGE</b>		<b>74,803 SF</b>







SAFeway

Walgreens

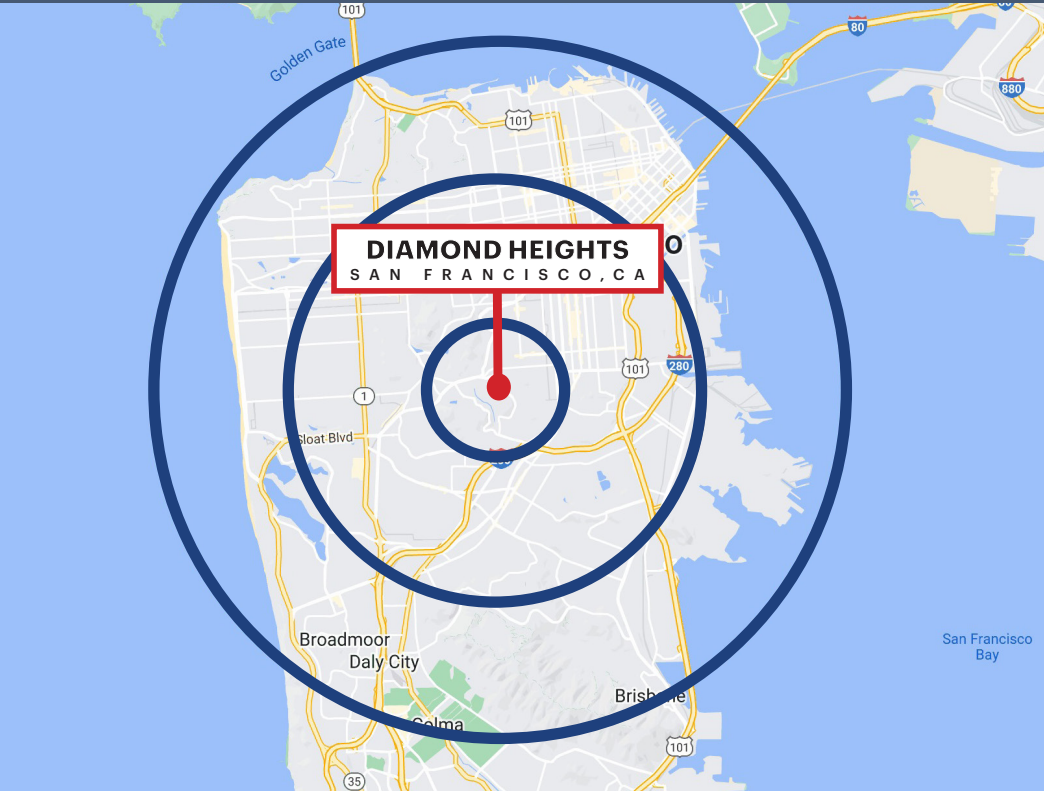
Great Clips

DIAMOND HEIGHTS BLVD. - 6,610 ADT









ESTIMATED POPULATION

1 MILE	3 MILES	5 MILES
29,153	250,511	653,685



DAYTIME EMPLOYEES

1 MILE	3 MILES	5 MILES
11,357	64,544	197,566



POPULATION FAMILY

1 MILE	3 MILES	5 MILES
23,270	195,748	463,026



AVERAGE HOUSEHOLD INCOME

1 MILE	3 MILES	5 MILES
\$175,286	\$189,406	\$198,646



ESTIMATED HOUSEHOLDS

1 MILE	3 MILES	5 MILES
10,044	88,550	246,943



AVERAGE HOUSEHOLD NET WORTH

1 MILE	3 MILES	5 MILES
\$2.12 M	\$2.2 M	\$2.37 M



TOTAL HOUSEHOLD EXPENDITURE

1 MILE	3 MILES	5 MILES
\$8,933	\$9,507	\$9,901



FOOD AND BEVERAGES

1 MILE	3 MILES	5 MILES
\$154.92 M	\$1.45 B	\$4.2 B



# DIAMOND HEIGHTS

## SAN FRANCISCO, CA



2099 Mt. Diablo Boulevard, Suite 206, Walnut Creek, CA 94596 | 616 E. Cota Street, Santa Barbara, CA 93103 | License #01784084 | [WWW.LOCKEHOUSE.COM](http://WWW.LOCKEHOUSE.COM)

\*Traffic Counts Source - Pages 2-6: Sites USA REGIS Online 8/30/22 | Demographics Source - Page 7: Sites USA REGIS Online 8/30/22