

FOR LEASE

**±5,808 SF
RETAIL SPACE
AVAILABLE**

**ARIZONA
LEATHER
INTERIORS**



LOCKEHOUSE

Jim Shepherd | Vice President | (925) 627-7902 | Jim@LockeHouse.com | License #01260555

SUMMARY

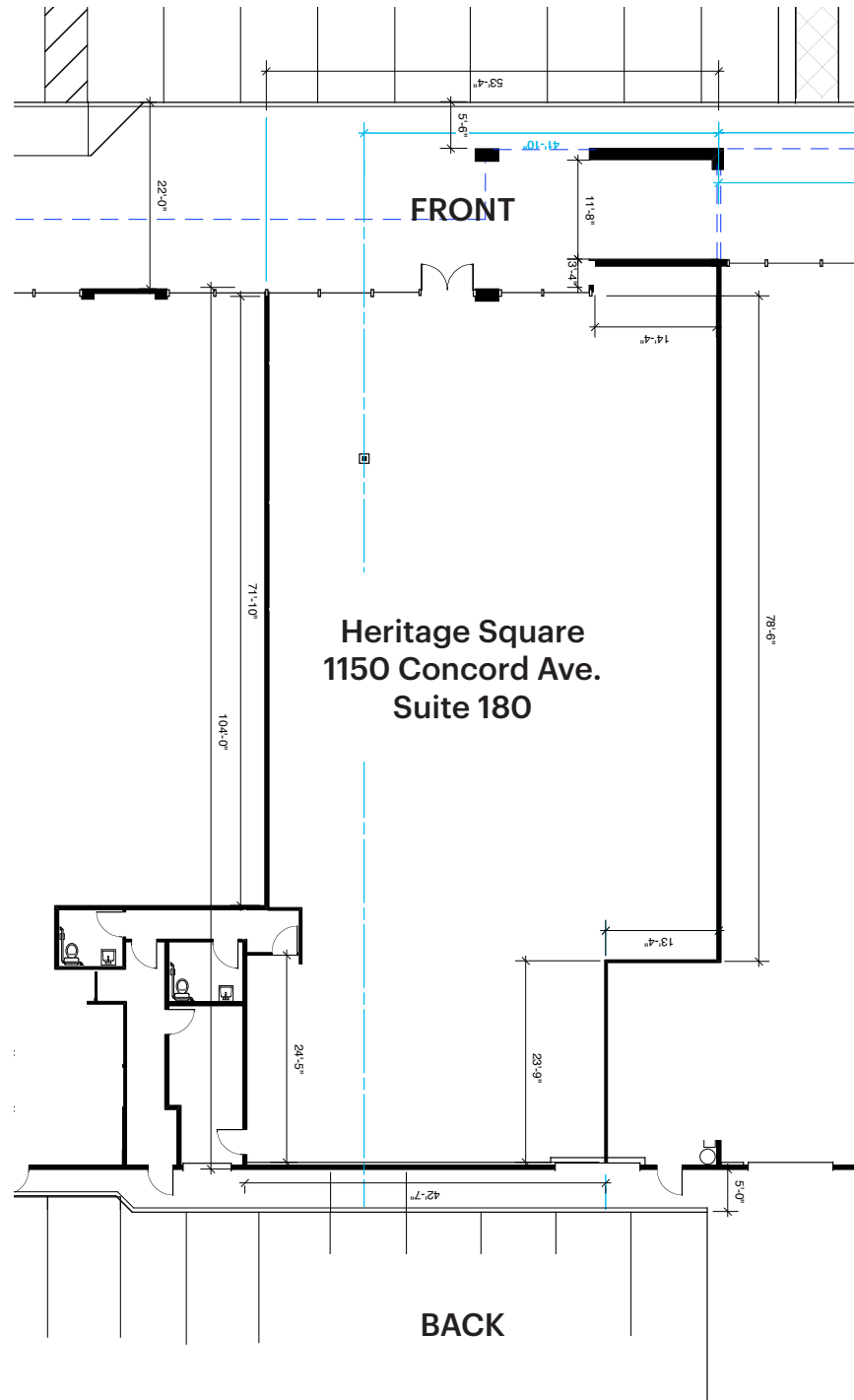
| | |
|----------------------|---|
| ADDRESS | 1150 Concord Ave., Suite 180, Concord, CA |
| AVAILABLE | Now |
| BUILDING AREA | ± 5,808 SF |
| BUILT | 1987 |
| RENT | Inquire with Broker |

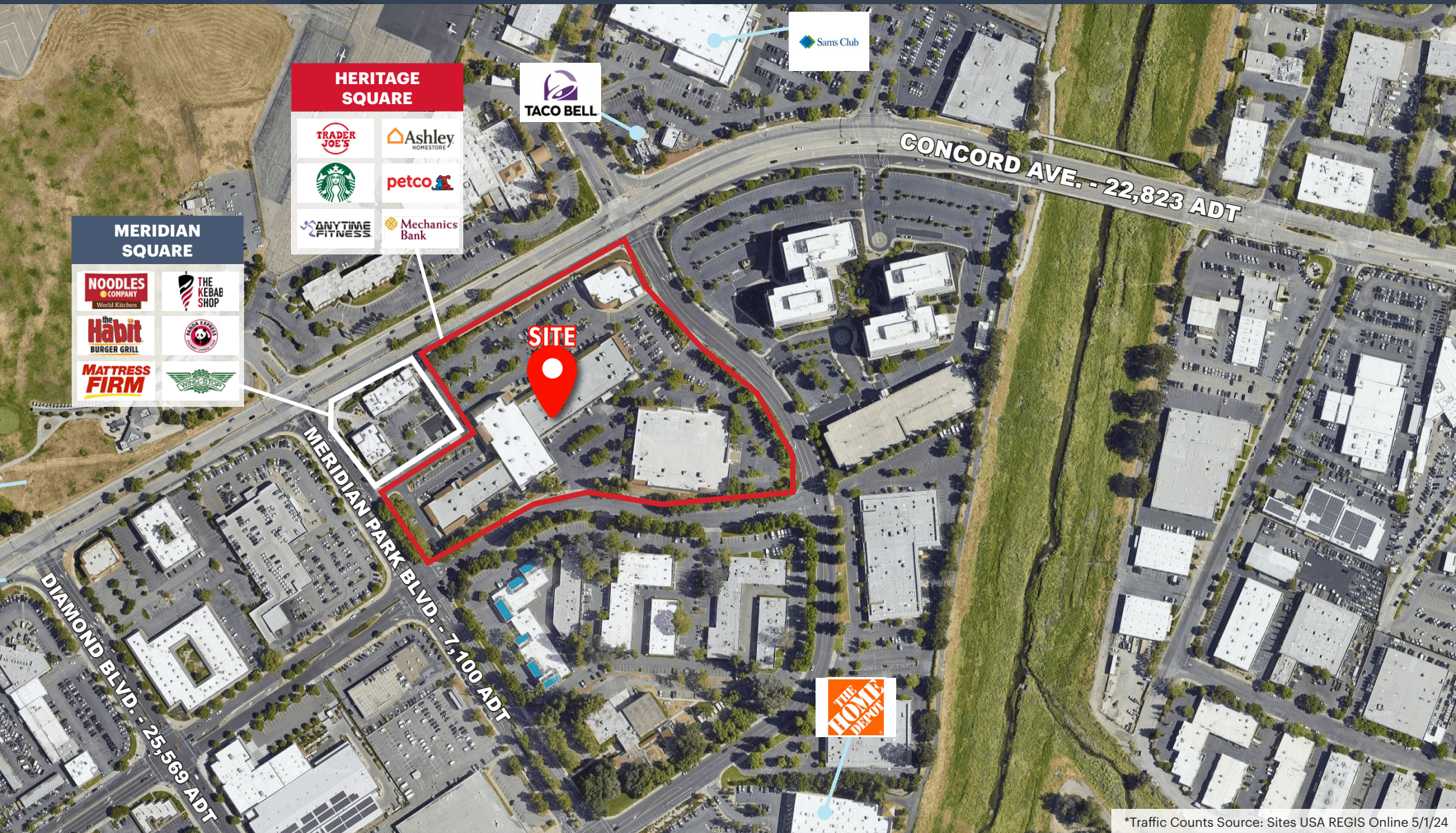
HIGHLIGHTS

- Central Concord Location
- Highly Visible to Concord Avenue with over 50,000 ADT
- Direct Access to I-680, Highway 242 and Highway 4
- Center Anchored by Trader Joe's
- Close Proximity to Sam's Club, Home Depot, Target, Sun Valley Mall, The Willows and The Veranda



1150 CONCORD AVE., SUITE 180, CONCORD, CA





*Traffic Counts Source: Sites USA REGIS Online 5/1/24

1150 CONCORD AVE., SUITE 180, CONCORD, CA





ESTIMATED POPULATION

| 1 MILE | 3 MILES | 5 MILES |
|--------|---------|---------|
| 10,839 | 127,485 | 239,302 |



ESTIMATED HOUSEHOLDS

| 1 MILE | 3 MILES | 5 MILES |
|--------|---------|---------|
| 4,213 | 48,281 | 94,245 |



DAYTIME EMPLOYEES

| 1 MILE | 3 MILES | 5 MILES |
|--------|---------|---------|
| 26,923 | 100,227 | 180,671 |



POPULATION FAMILY

| 1 MILE | 3 MILES | 5 MILES |
|--------|---------|---------|
| 7,727 | 100,707 | 187,937 |



AVERAGE HOUSEHOLD INCOME

| 1 MILE | 3 MILES | 5 MILES |
|-----------|-----------|-----------|
| \$120,724 | \$151,437 | \$171,566 |



TOTAL HOUSEHOLD EXPENDITURE

| 1 MILE | 3 MILES | 5 MILES |
|---------|---------|---------|
| \$3,127 | \$3,706 | \$4,091 |



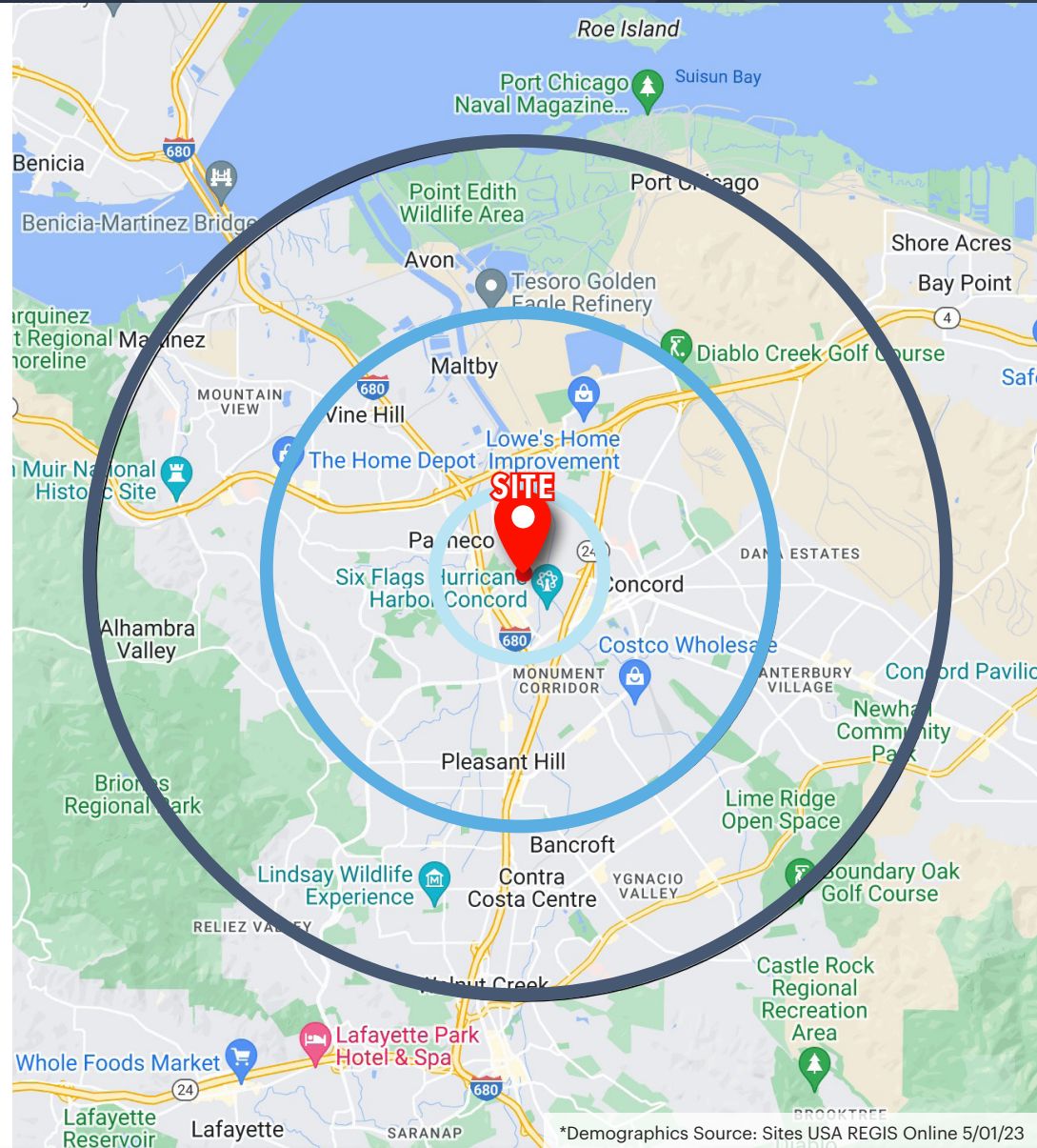
AVERAGE HOUSEHOLD NET WORTH

| 1 MILE | 3 MILES | 5 MILES |
|---------|---------|---------|
| \$1.46M | \$1.62M | \$1.81M |



FOOD AND BEVERAGES

| 1 MILE | 3 MILES | 5 MILES |
|--------|---------|---------|
| \$966 | \$1,140 | \$1,255 |



*Demographics Source: Sites USA REGIS Online 5/01/23

1150 CONCORD AVE., SUITE 180, CONCORD, CA



LOCKEHOUSE

JIM SHEPHERD

Vice President
(925) 627-7902

Jim@Lockehouse.com

License #01260555

Heritage Square

Heritage Square



1170

 **Mechanics Bank**

 **W Studio**

1170-160



LOCKEHOUSE

Jim Shepherd | Vice President | (925) 627-7902 | Jim@Lockehouse.com | License #01260555