

FOR LEASE

**±5,808 SF
RETAIL SPACE
AVAILABLE**

**ARIZONA
LEATHER
INTERIORS**



LOCKEHOUSE

Jim Shepherd | Vice President | (925) 627-7902 | Jim@LockeHouse.com | License #01260555

SUMMARY

ADDRESS	1150 Concord Ave., Suite 180, Concord, CA
AVAILABLE	Now
BUILDING AREA	± 5,808 SF
BUILT	1987
RENT	Inquire with Broker

HIGHLIGHTS

- Central Concord Location
- Highly Visible to Concord Avenue with over 50,000 ADT
- Direct Access to I-680, Highway 242 and Highway 4
- Center Anchored by Trader Joe's
- Close Proximity to Sam's Club, Home Depot, Target, Ashley Furniture, Sun Valley Mall, The Willows and The Veranda



1150 CONCORD AVE., SUITE 180, CONCORD, CA



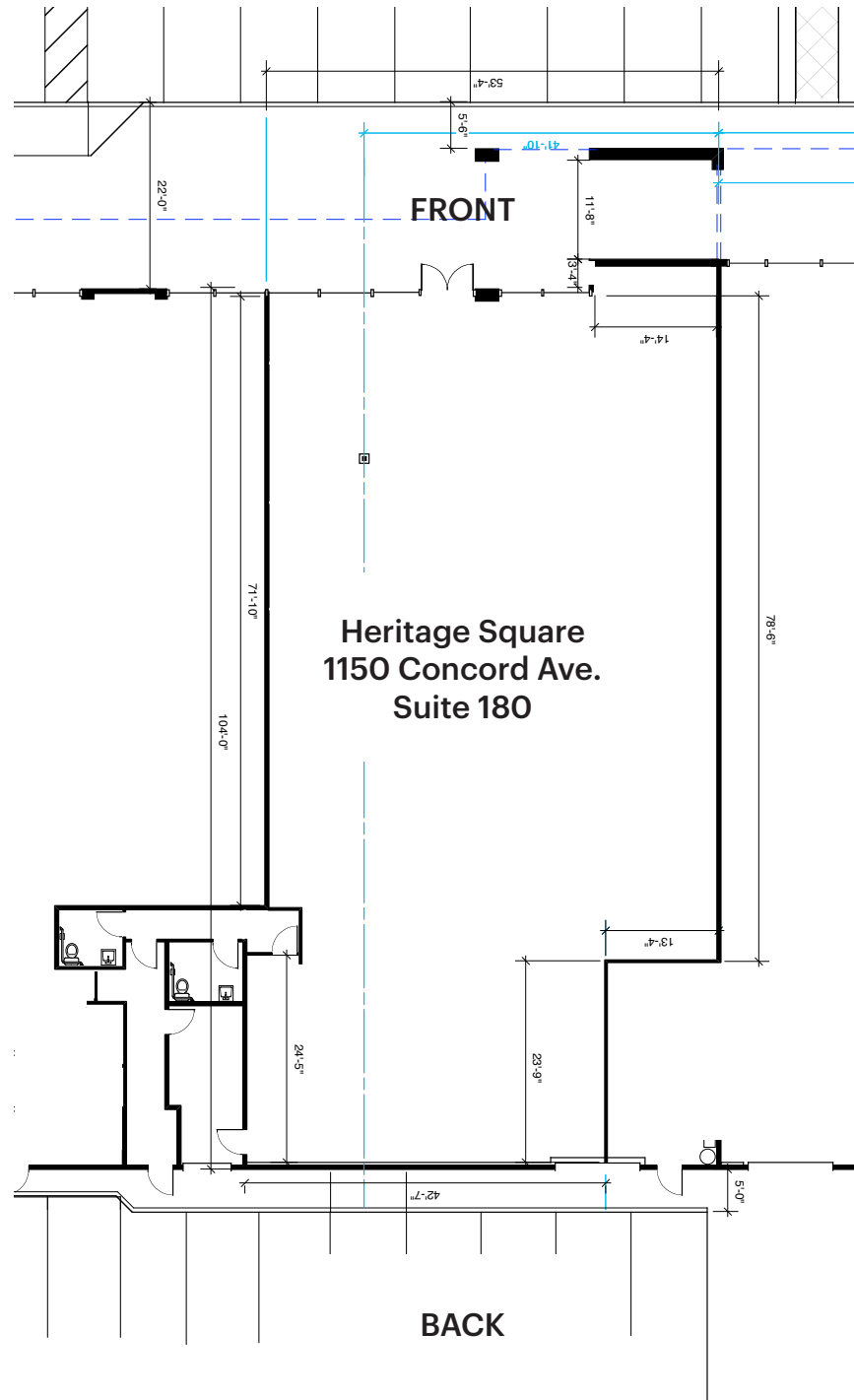
LOCKEHOUSE

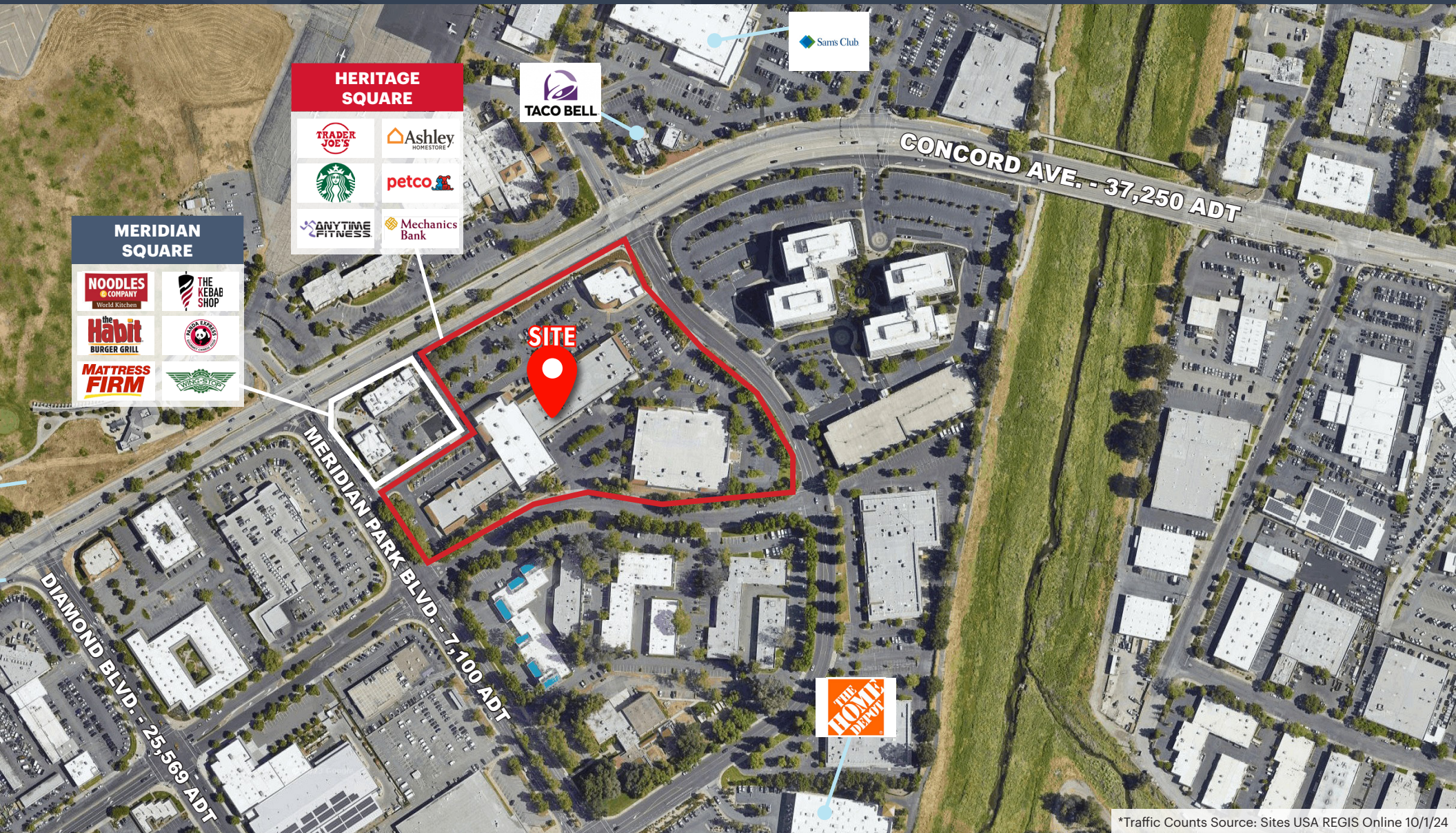
JIM SHEPHERD

Vice President
(925) 627-7902

Jim@LockeHouse.com

License #01260555





*Traffic Counts Source: Sites USA REGIS Online 10/1/24

1150 CONCORD AVE., SUITE 180, CONCORD, CA



LOCKEHOUSE

JIM SHEPHERD
Vice President
(925) 627-7902
Jim@Lockehouse.com
License #01260555





ESTIMATED POPULATION

1 MILE	3 MILES	5 MILES
10,195	126,602	239,672



ESTIMATED HOUSEHOLDS

1 MILE	3 MILES	5 MILES
4,123	48,867	95,623



DAYTIME EMPLOYEES

1 MILE	3 MILES	5 MILES
26,999	101,434	184,886



POPULATION FAMILY

1 MILE	3 MILES	5 MILES
7,458	99,098	182,310



AVERAGE HOUSEHOLD INCOME

1 MILE	3 MILES	5 MILES
\$128,702	\$148,873	\$168,137



TOTAL HOUSEHOLD EXPENDITURE

1 MILE	3 MILES	5 MILES
\$3,127	\$3,706	\$4,091



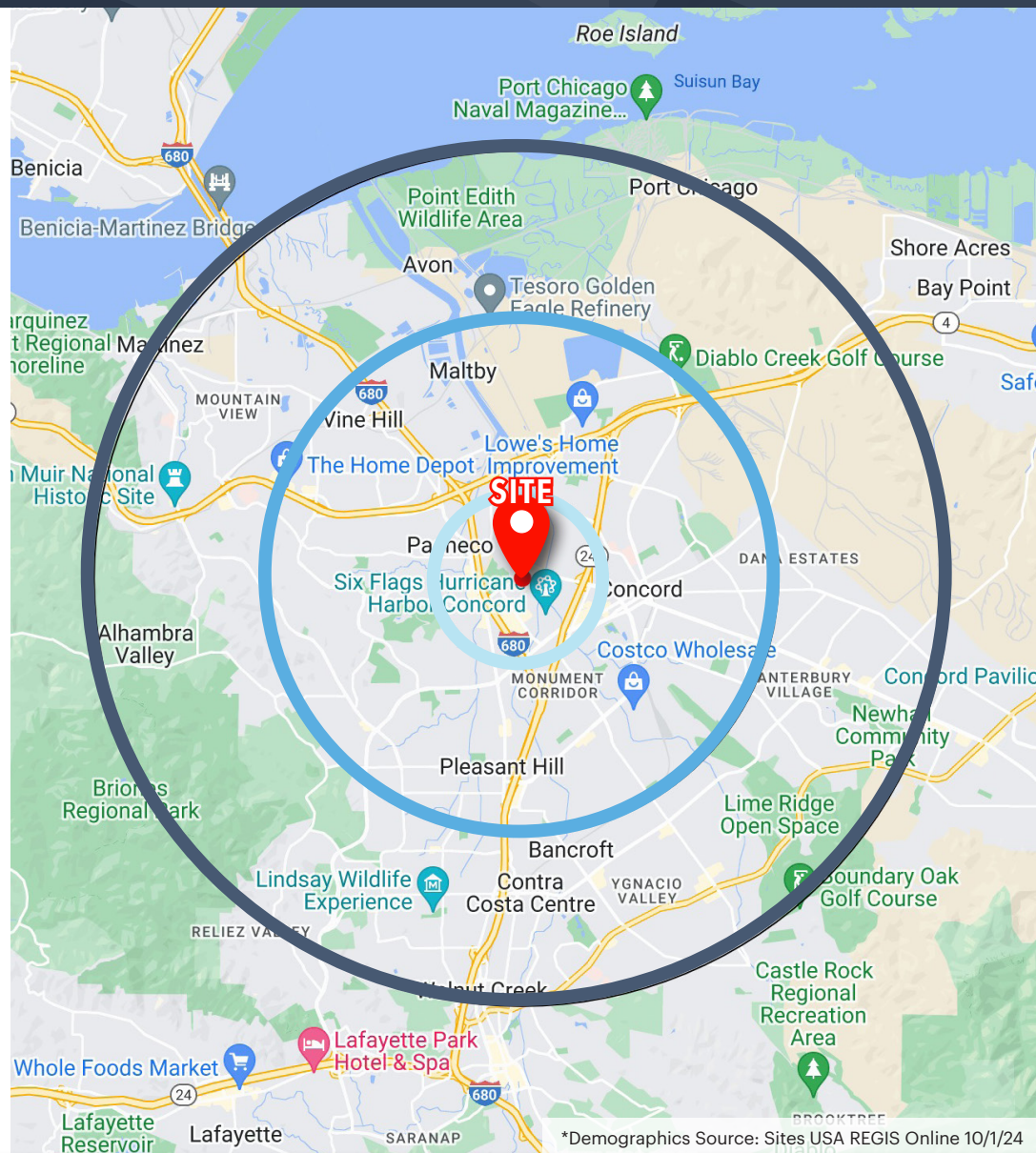
AVERAGE HOUSEHOLD NET WORTH

1 MILE	3 MILES	5 MILES
\$1.08 M	\$1.4 M	\$1.64 M



FOOD AND BEVERAGES

1 MILE	3 MILES	5 MILES
\$980	\$1,115	\$1,224



*Demographics Source: Sites USA REGIS Online 10/1/24

1150 CONCORD AVE., SUITE 180, CONCORD, CA



LOCKEHOUSE

JIM SHEPHERD

Vice President
(925) 627-7902

Jim@Lockehouse.com

License #01260555

Heritage Square

Heritage Square



1170

 **Mechanics Bank**

 **W Studio**

1170-160



LOCKEHOUSE

Jim Shepherd | Vice President | (925) 627-7902 | Jim@LockeHouse.com | License #01260555