

STONE CREEK VILLAGE

451-465 CANYON DEL REY Blvd., DEL REY OAKS, CA 93940



LOCKEHOUSE

2099 Mt. Diablo Blvd., Suite 206
Walnut Creek, CA 94596

KURT GRUNDMAN

(415) 640-8779

Kurt@Lockehouse.com

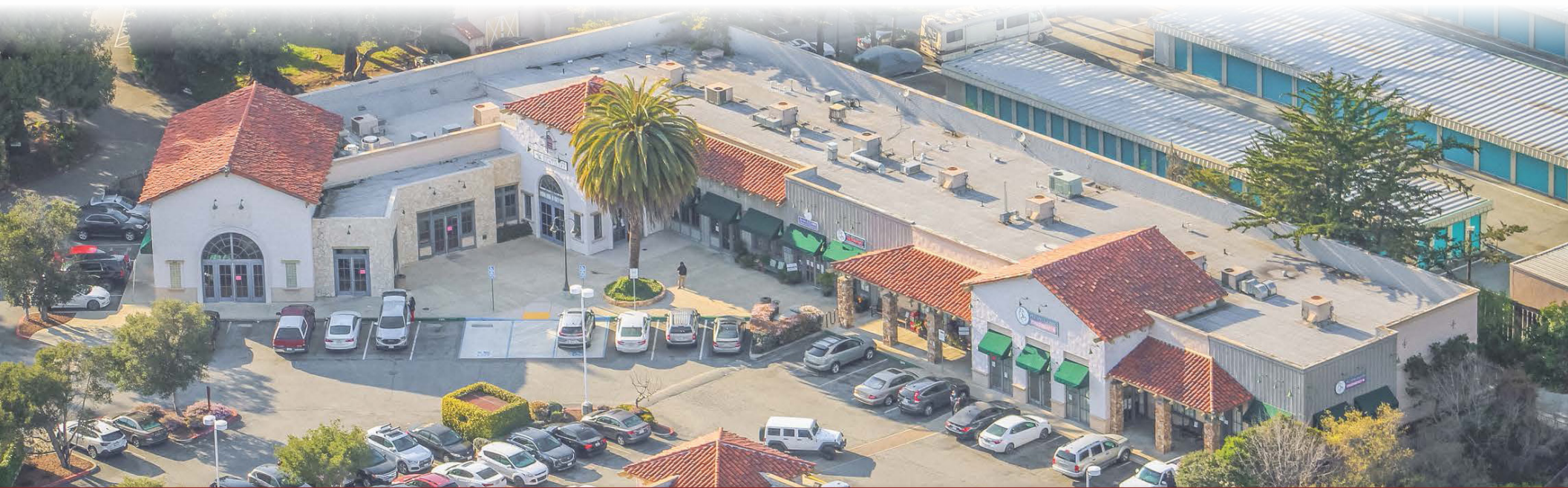
License #01229064

SUMMARY

- ADDRESS** 451-465 Canyon Del Rey Blvd., Del Rey Oaks, CA
- LOCATION** Corner of Monterey Salinas Highway & Canyon Del Rey Blvd.
- TYPE** ± 30,000 Regional Center
- AVAILABLE** ± 2,188 - 4,438 SF
- CO-TENANT** Starbucks, Subway, Wells Fargo, BluePearl, Jack in the Box

HIGHLIGHTS

- Direct Access to Highway 1 & Monterey Peninsula
- Regional Draw
- Property Located on the Main Thoroughfare connecting Monterey, Salinas & Carmel
- Close Proximity to Ryan Ranch Business Park, Monterey Airport



LOCKEHOUSE

2099 Mt. Diablo Blvd., Suite 206
Walnut Creek, CA 94596

DANIEL ETTER

(510) 219-1376

Daniel@Lockehouse.com

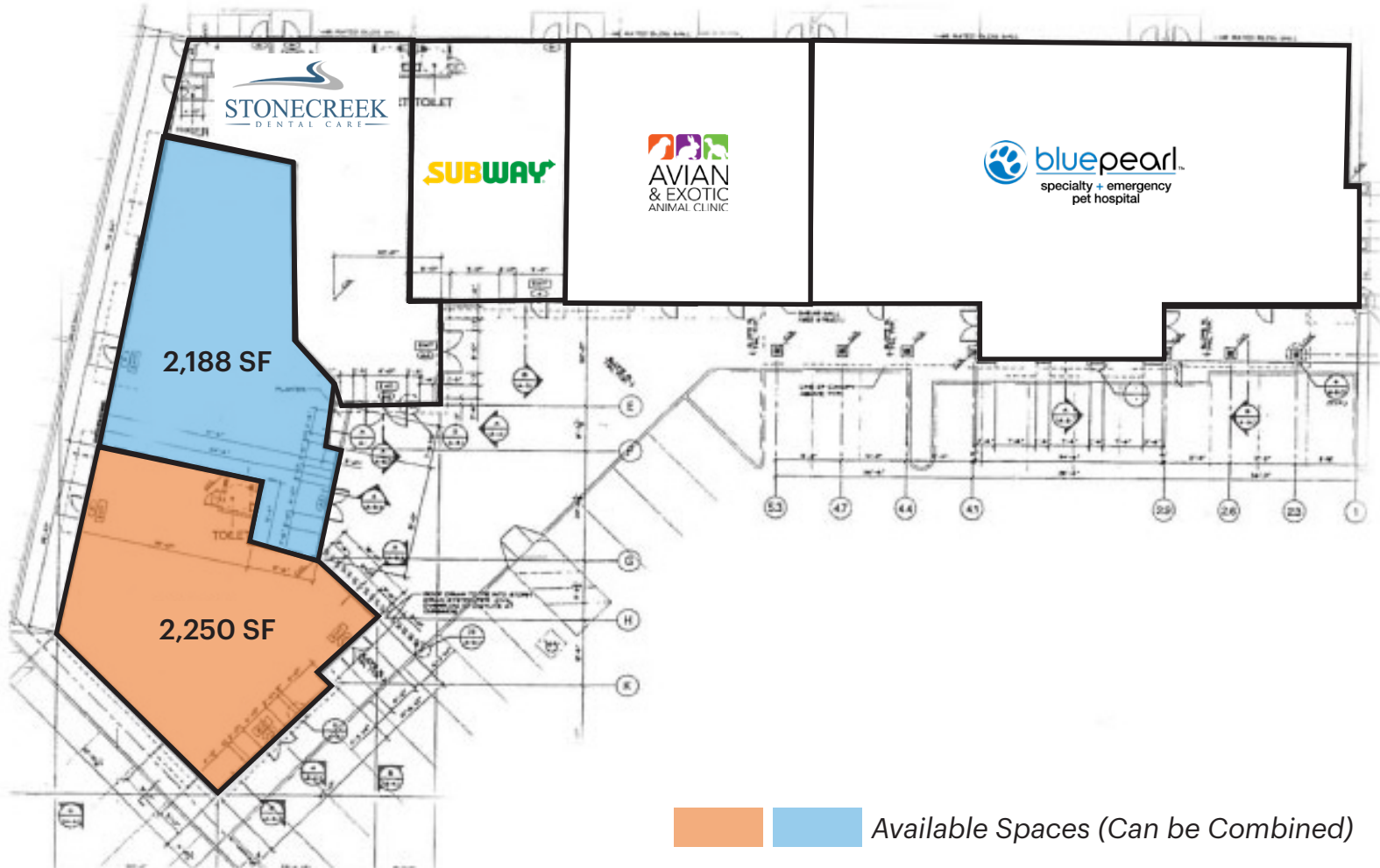
License #02192761

KURT GRUNDMAN

(415) 640-8779

Kurt@Lockehouse.com

License #01229064



LOCKEHOUSE

2099 Mt. Diablo Blvd., Suite 206
Walnut Creek, CA 94596

DANIEL ETTER

(510) 219-1376
Daniel@Lockehouse.com
License #02192761

KURT GRUNDMAN

(415) 640-8779
Kurt@Lockehouse.com
License #01229064



LOCKEHOUSE

2099 Mt. Diablo Blvd., Suite 206
Walnut Creek, CA 94596

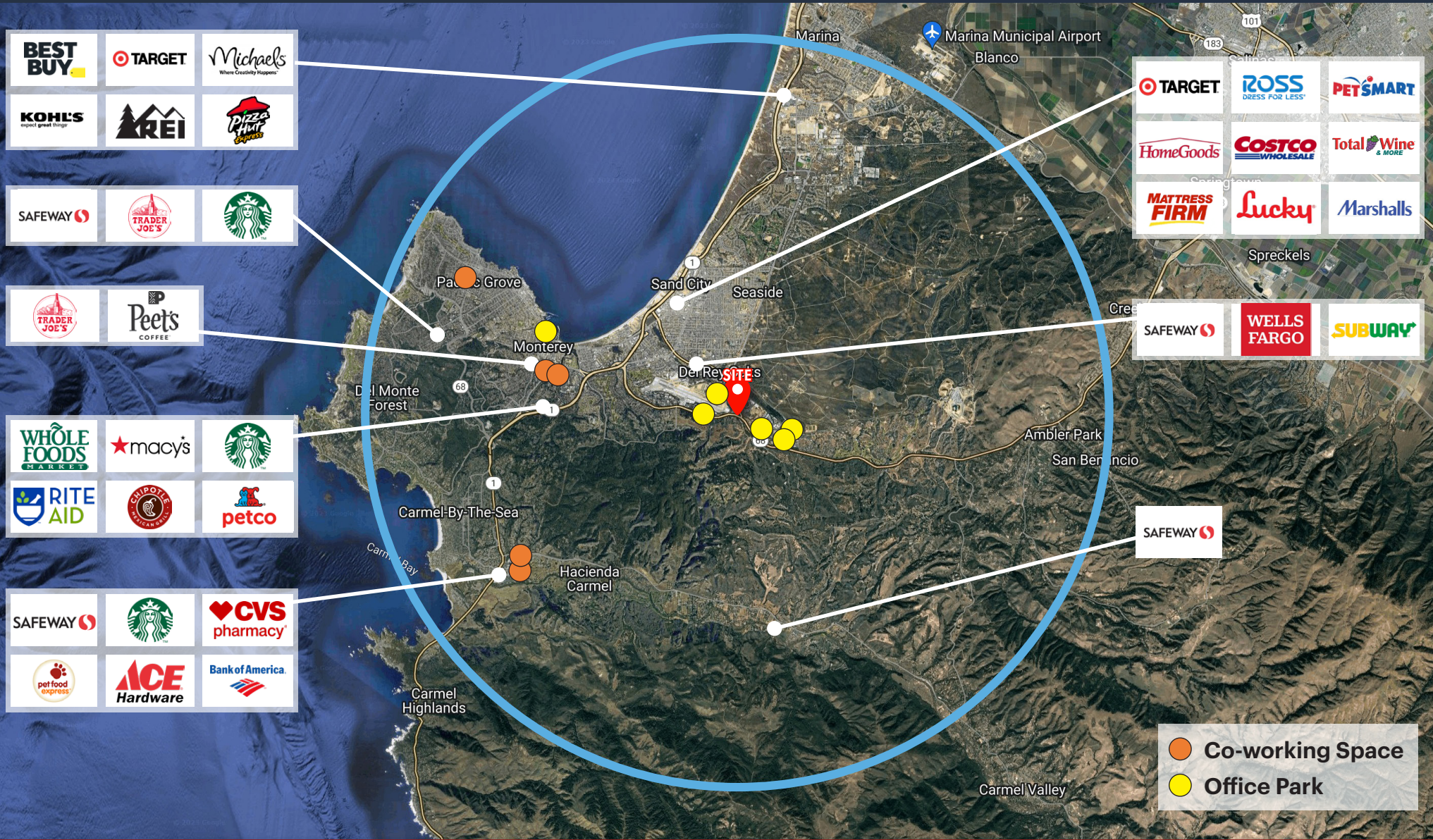
DANIEL ETTER

(510) 219-1376
Daniel@Lockehouse.com
License #02192761

KURT GRUNDMAN

(415) 640-8779
Kurt@Lockehouse.com
License #01229064

MARKET AERIAL | 7 Mile Radius



LOCKEHOUSE

2099 Mt. Diablo Blvd., Suite 206
Walnut Creek, CA 94596

DANIEL ETTER

(510) 219-1376
Daniel@Lockehouse.com
License #02192761

KURT GRUNDMAN

(415) 640-8779
Kurt@Lockehouse.com
License #01229064



POPULATION

1 MILE	3 MILES	5 MILES
18,905	49,968	116,485



DAYTIME POPULATION

1 MILE	3 MILES	5 MILES
11,380	37,884	60,169



ESTIMATED HOUSEHOLDS

1 MILE	3 MILES	5 MILES
6,829	18,929	45,071



ESTIMATED AVERAGE HOUSEHOLD INCOME

1 MILE	3 MILES	5 MILES
\$97,462	\$119,849	\$130,986



ESTIMATED AVERAGE HOUSEHOLD NET WORTH

1 MILE	3 MILES	5 MILES
\$1.01 M	\$1.21 M	\$1.44 M



COLLEGE DEGREE BACHELOR DEGREE OR HIGHER

1 MILE	3 MILES	5 MILES
29.7%	38.6%	48.2%



TOTAL RETAIL EXPENDITURES

1 MILE	3 MILES	5 MILES
\$220.85 M	\$711.7 M	\$1.81 B



*Demographics Source: Sites USA REGIS Online 5/03/23





LOCKEHOUSE

KURT GRUNDMAN

(415) 640-8779

Kurt@LockeHouse.com

License #01229064

2099 Mt. Diablo Blvd., Suite 206

Walnut Creek, CA 94596

License #01784084

www.**LOCKEHOUSE**.com