



# Park Place At San Mateo

SECOND GENERATION RESTAURANT & SALON SPACES AVAILABLE



**LOCKEHOUSE**

**CHROMATA**  
RETAIL

**MEGHAN BASSO**  
(925) 488-4143  
meghan@lockehouse.com  
License #01880016

**TATIANA GUZMAN**  
(925) 783-2480  
tatiana@chromatare.com  
License #0211438



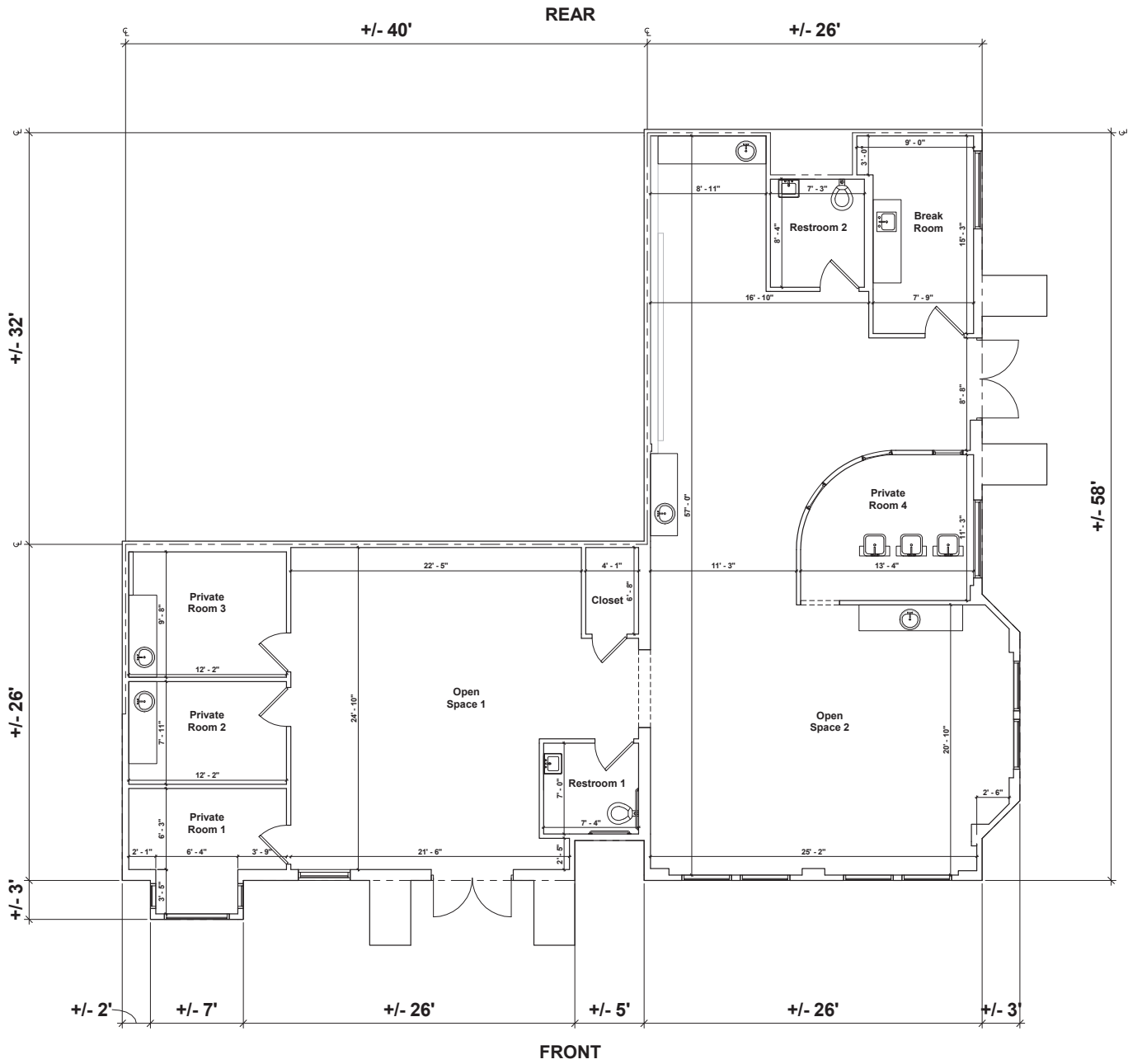
## SUMMARY

|                  |  |
|------------------|--|
| <b>ADDRESS</b>   | 1001-1101 Park Place, San Mateo, CA 94403  |
| <b>COUNTY</b>    | San Mateo County   |
| <b>AVAILABLE</b> | Immediately  |
| <b>RENT</b>      | Call to Inquire  |
| <b>SIZE</b>      | Suite 300, Second-Gen Salon: 2,535 SF<br>Suite 1051, Second-Gen Restaurant: 1,072 SF |

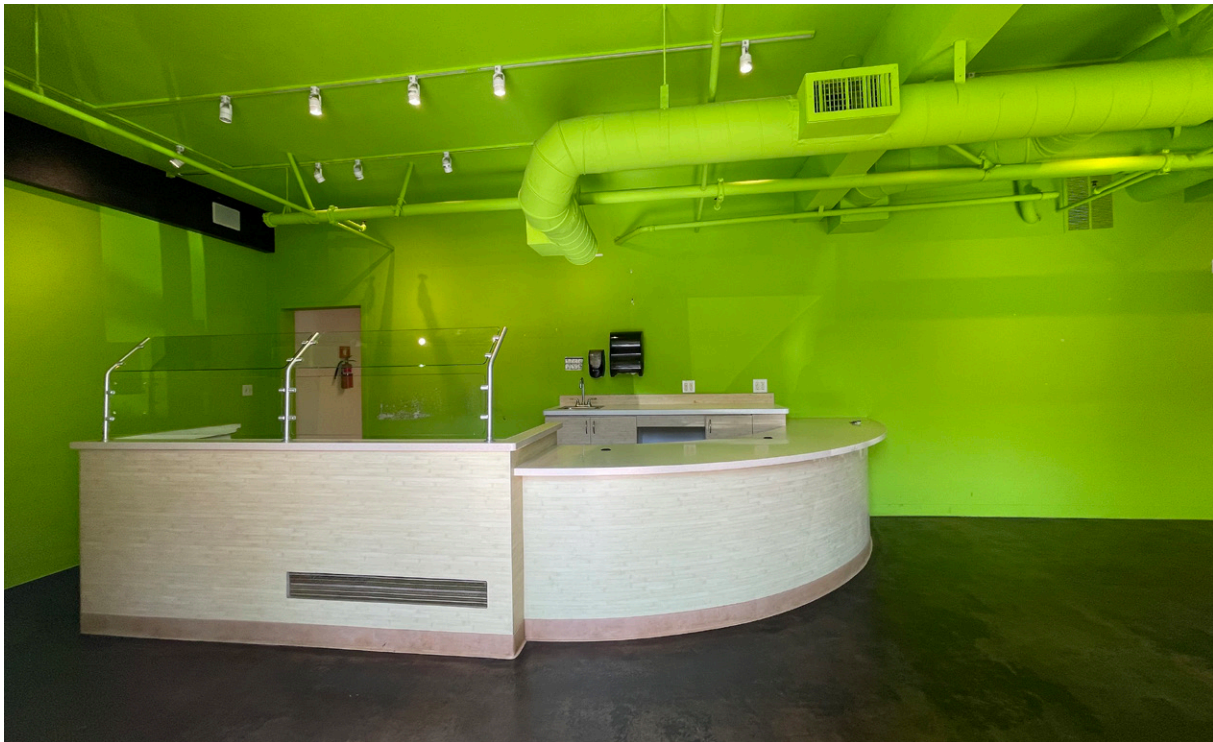
## HIGHLIGHTS

- Turn-key, ground floor, second-gen poke restaurant and salon spaces available NOW
- Beautiful, park-like setting that opens to flowing creek
- Across the street from Park Place at Bay Meadows: 142,200 SF office/retail development that is anchored by Whole Foods
- Proximity to major tech headquarter offices including Zynga, Roblox and Breyton
- One block from Kaiser Permanente San Mateo Medical Offices
- Easy accessibility to US-101

# Space 300 - Second-Gen Salon



# Space 1051 - Second-Gen Restaurant



# MARKET AERIAL



  
TACO BELL



US 101

**SITE**

227,355 ADT















**Hillsdale Shopping Center**

|  |   |   |
|--|---|---|
|  |  |  |
|  |  |  |
|  |  |  |
|  |  |  |
|  |  |  |
|  |  |  |

**BevMo!**

E. Hillside Blvd. - 18,975 ADT



## POPULATION

| 1 MILE | 3 MILES | 5 MILES |
|--------|---------|---------|
| 29,710 | 169,367 | 243,957 |



## ESTIMATED HOUSEHOLDS

| 1 MILE  | 3 MILES | 5 MILES |
|---------|---------|---------|
| 111,671 | 66,524  | 96,909  |



## ESTIMATED AVERAGE HOUSEHOLD INCOME

| 1 MILE    | 3 MILES   | 5 MILES   |
|-----------|-----------|-----------|
| \$226,003 | \$250,591 | \$268,047 |



## ESTIMATED AVERAGE HOUSEHOLD NET WORTH

| 1 MILE   | 3 MILES  | 5 MILES  |
|----------|----------|----------|
| \$2.26 M | \$2.64 M | \$2.72 M |



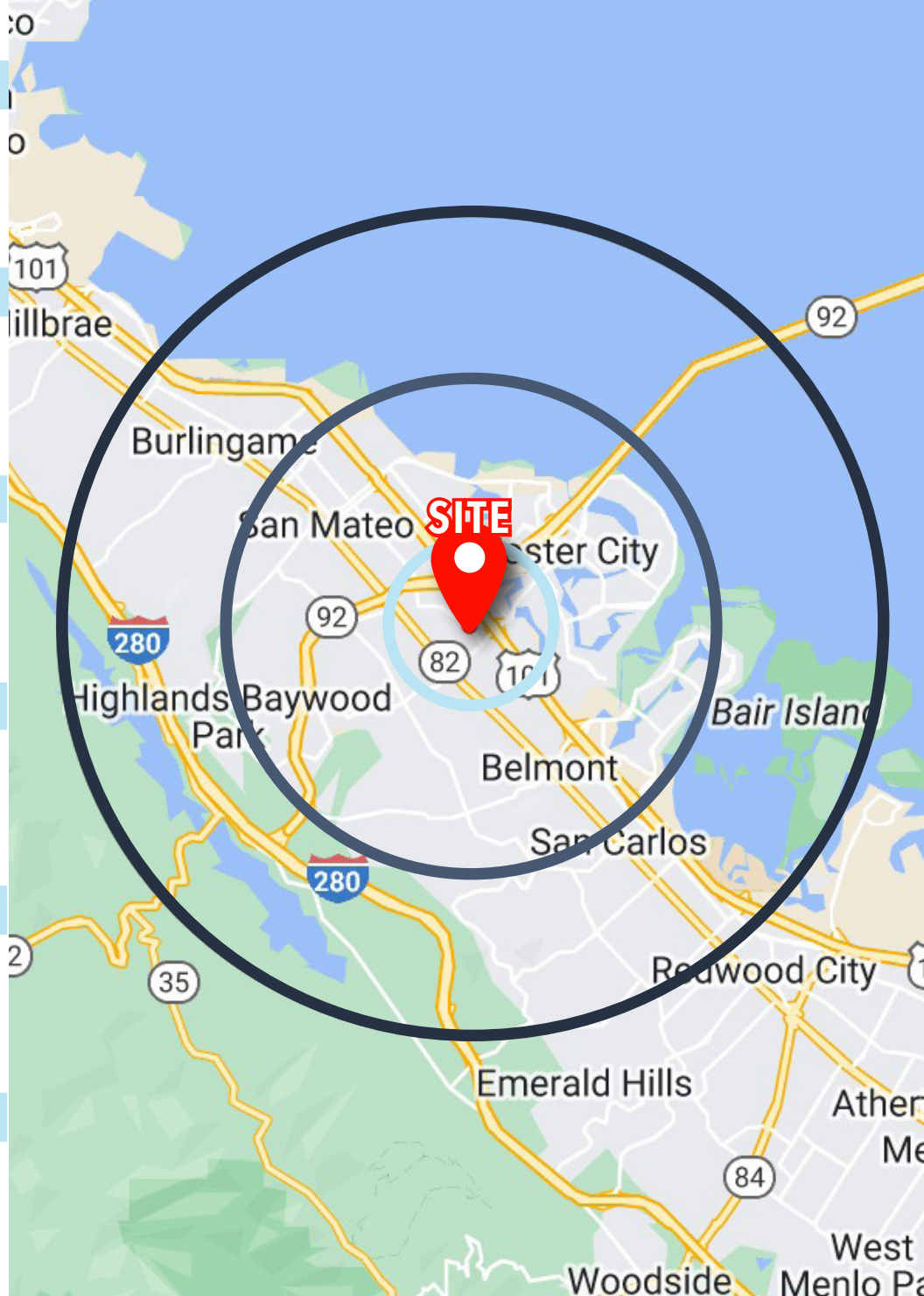
## COLLEGE DEGREE BACHELOR DEGREE OR HIGHER

| 1 MILE | 3 MILES | 5 MILES |
|--------|---------|---------|
| 61.6%  | 64.3%   | 65.3%   |



## TOTAL RETAIL EXPENDITURES

| 1 MILE     | 3 MILES  | 5 MILES  |
|------------|----------|----------|
| \$770.23 M | \$4.52 B | \$6.66 B |



\*Demographic Source: Sites USA REGIS Online 1/07/25



# PARK PLACE AT SAN MATEO

**MEGHAN BASSO**

(925) 488-4143

[meghan@lockehouse.com](mailto:meghan@lockehouse.com)

License #01880016

**TATIANA GUZMAN**

(925) 783-2480

[tatiana@chromatare.com](mailto:tatiana@chromatare.com)

License #02111438

**CHROMATA**  
RETAIL



**LOCKEHOUSE**