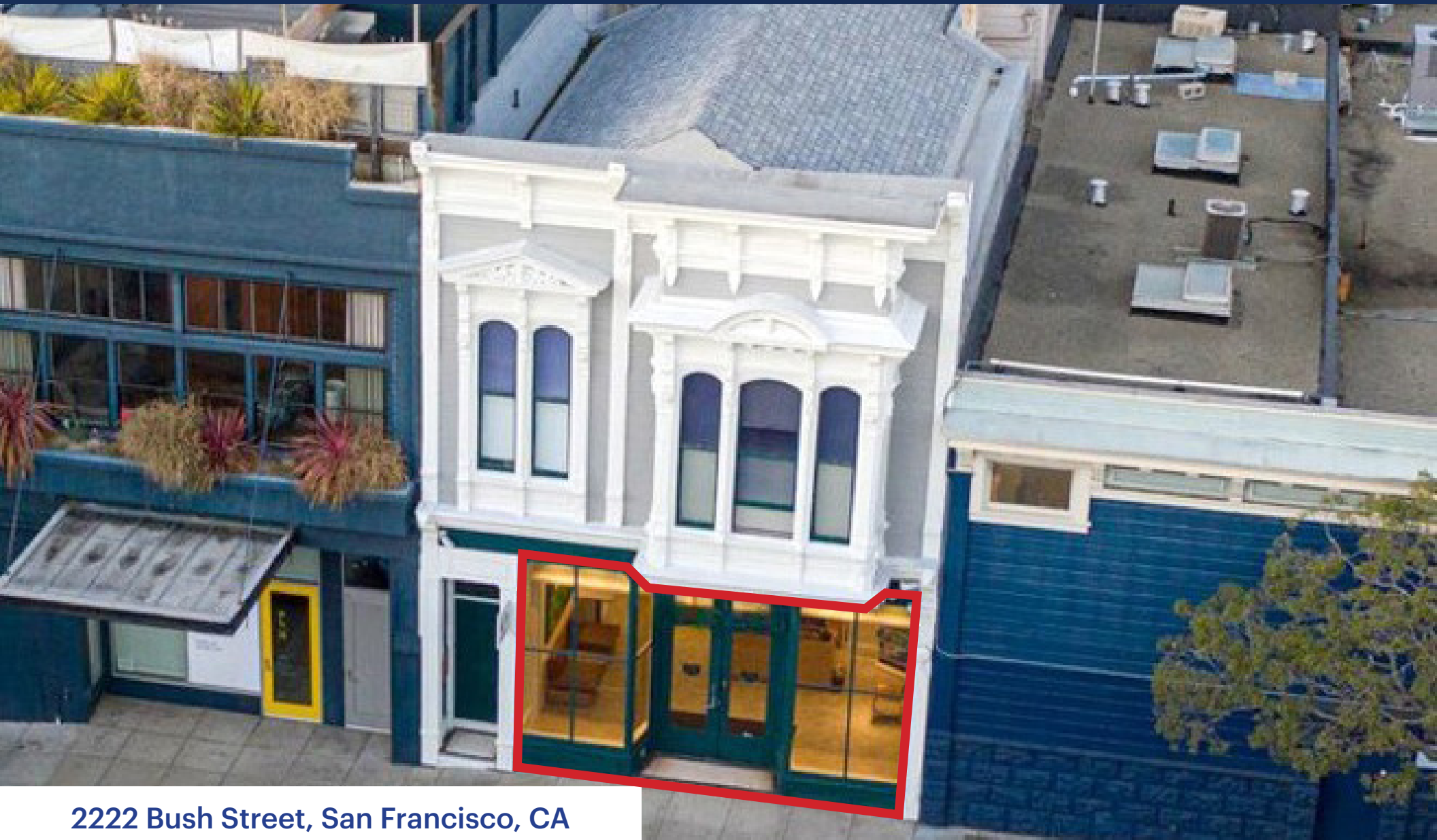


Retail For Lease

± 3,160 SF Ground Floor Retail
Plus ± 2000 SF of Lower Level



2222 Bush Street, San Francisco, CA



LOCKEHOUSE

2099 Mt. Diablo Blvd., Suite 206
Walnut Creek, CA 94596 | License #01784084

KURT GRUNDMAN
(415) 640-8779
kurt@lockehouse.com
License #01229064

PROPERTY SUMMARY

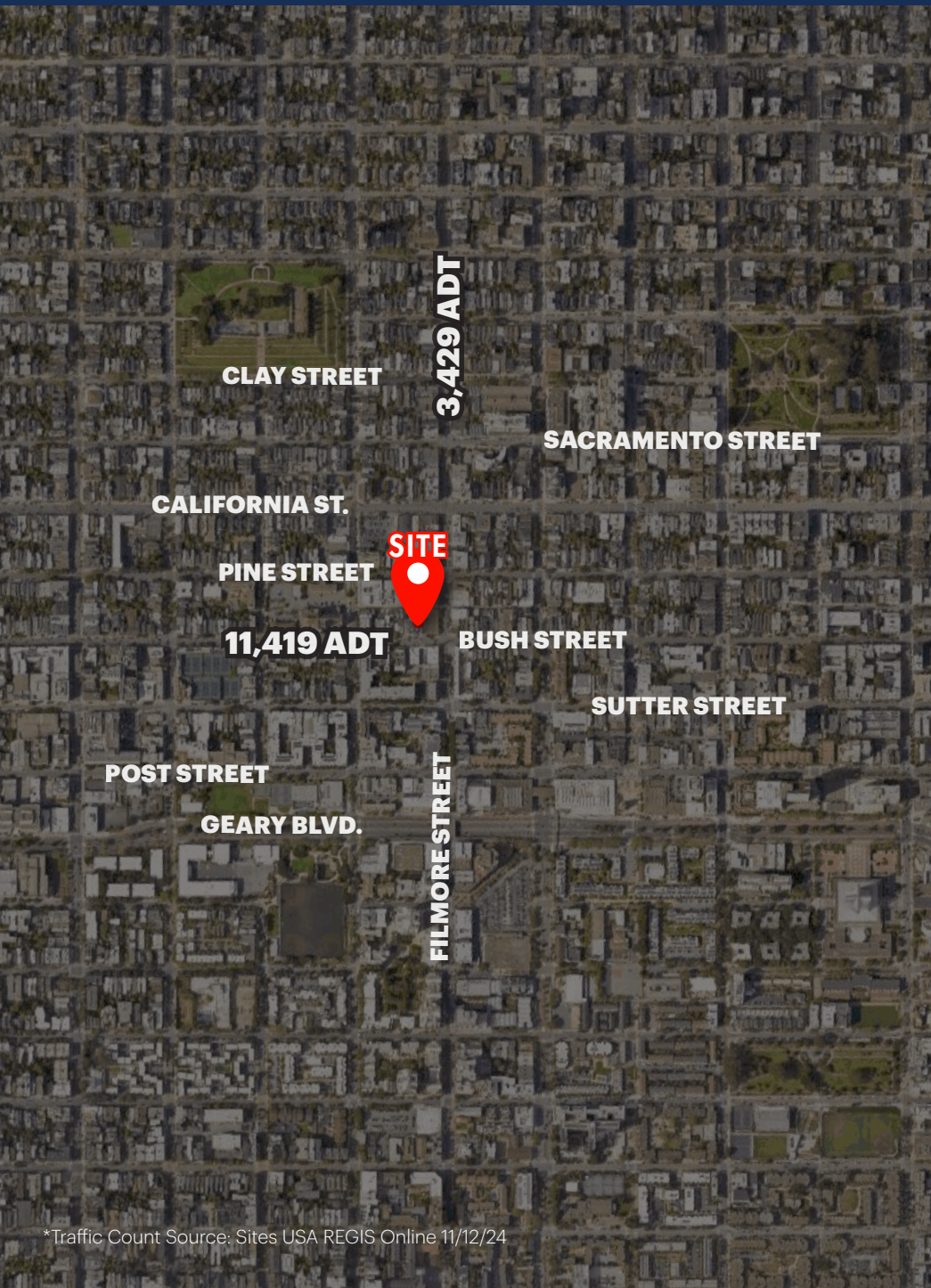
The property is located in the highly desired Lower Pacific Heights neighborhood and is situated next to Fillmore Street which is home to blocks of high-end retailers, neighborhood bars and restaurants. 2222 Bush Street is situated in close proximity to the Fillmore District, Pacific Heights and Japantown.

RETAIL FOR LEASE
CALL FOR DETAILS
(415) 640-8779

ADDRESS	2222 Bush Street San Francisco, CA 94115	
BUILDING SIZE	Ground Floor	±3,160 SF
	Lower Level	±2,075 SF
LEASING RATE	\$5.00 NNN Per SF	



TRADE MARKET AERIAL



CLAY STREET

Alice & Olivia
Veronica Beard
DiPietro Todd Salon
Paige
Ten-Ichi
Cielo
Joe & the Juice
Salt & Straw



Palmer's
Zero & Co.
Via Veneto
Athleta
Starbucks
Eileen Fisher
La Mediterranee
D&M Fine Wines



SACRAMENTO STREET

Peet's Coffee
Mudpie
Jonathan Adler
Jane
knix
Benefit
Dandelion Chocolate
Moscot
Pinsa Rossa



Frame
Credo Beauty
Oaktown Spice Shop
Velvet
Diptyque
Cuyana
Dumpling Story
Wells Fargo



CALIFORNIA STREET

Taco Bar
Flannel
apizza
Mio
Third Love
Bun Mee
Freda Salvador
Crescent Moon Noosh



FILMORE STREET

Rag & Bone
Gorjana
Clare V.
Redmint
Lululemon
Sézane
Harry's Bar
Little Shucker
Byredo



PINE STREET

Kiehl's
Paper Source
Roam Artisan Burgers
Florio
Saje Natural Wellness
SPQR
The Finery
Incision Optometry
Herpal Apothecary



Fiat Lux
The Shade Store
No Rest for Bridget
SVRN
Woodhouse Fish Co.
Compton's Coffee
Hiho Silver
Zuri
Chapeaux Michelle



BUSH STREET

Walgreens
Philmore Creamery
Crossroads Trading
Fillmore Bakeshop



California Tennis Club
Cielo
Russian Hill Dog Grooming
Music Lovers Audio & Video

*Traffic Count Source: Sites USA REGIS Online 11/12/24

DEMOGRAPHICS



POPULATION

1 MILE	3 MILES	5 MILES
102,519	490,184	737,946



DAYTIME POPULATION

1 MILE	3 MILES	5 MILES
55,984	503,841	572,513



BUSINESSES

1 MILE	3 MILES	5 MILES
7,224	42,291	52,215



HOUSEHOLDS

1 MILE	3 MILES	5 MILES
55,072	242,120	329,371



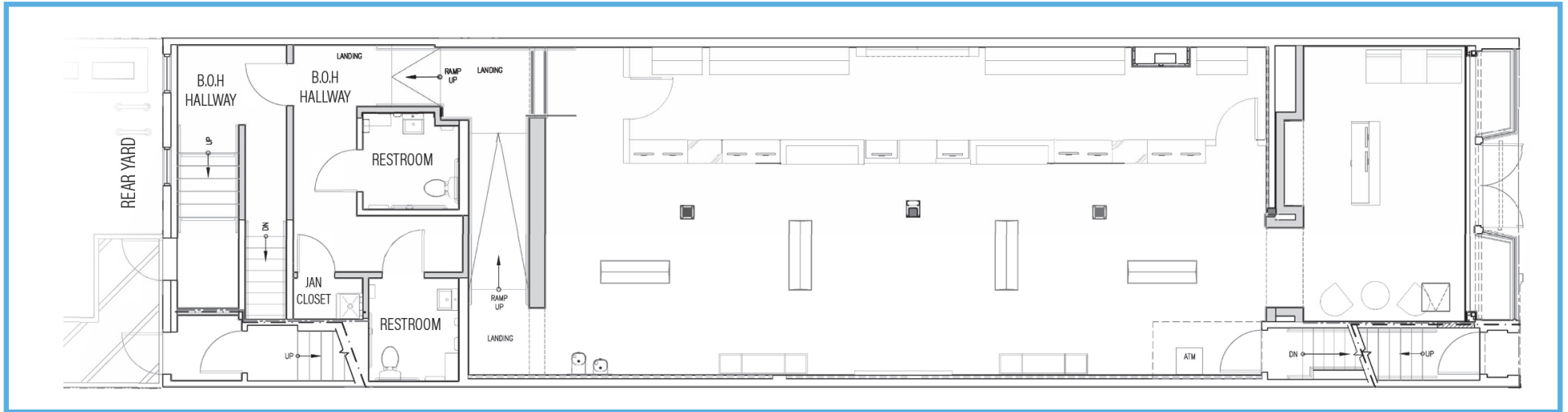
AVG HOUSEHOLD INCOME

1 MILE	3 MILES	5 MILES
\$229,006	\$230,525	\$227,460

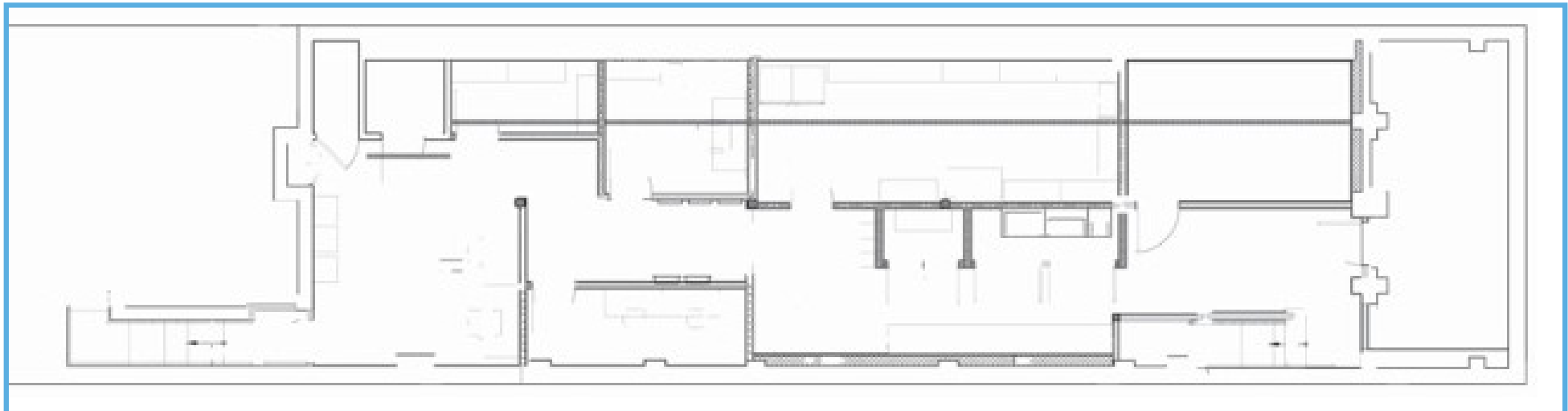
*Demographics Source: Sites USA REGIS Online 11/12/24

FLOOR PLAN

GROUND FLOOR
±3,160 SF



LOWER LEVEL
±2,075 SF



Located in the Fillmore District.
Close to public transportation and one
of San Francisco's most desirable and
storied neighborhoods



LOCKEHOUSE

2099 Mt. Diablo Blvd., Suite 206
Walnut Creek, CA 94596 | License #01784084

KURT GRUNDMAN
(415) 640-8779
kurt@lockehouse.com
License #01229064