

AVAILABLE FOR LEASE | ±32,895 SF

1097 LEIGH AVE., SAN JOSE, CA 95126



LOCKEHOUSE
RETAIL GROUP

JON WOODCOX | 925-788-3494
jon@lockehouse.com | License #01923630

SUMMARY AND DEMOGRAPHICS

HIGHLIGHTS

ADDRESS: 1097 Leigh Ave, San Jose, CA 95126

COUNTY: Santa Clara

BUILDING SIZE: ±32,895 SF

LOADING: Rollup door with separate compactor pad

APN: 284-31-007, 284-31-009

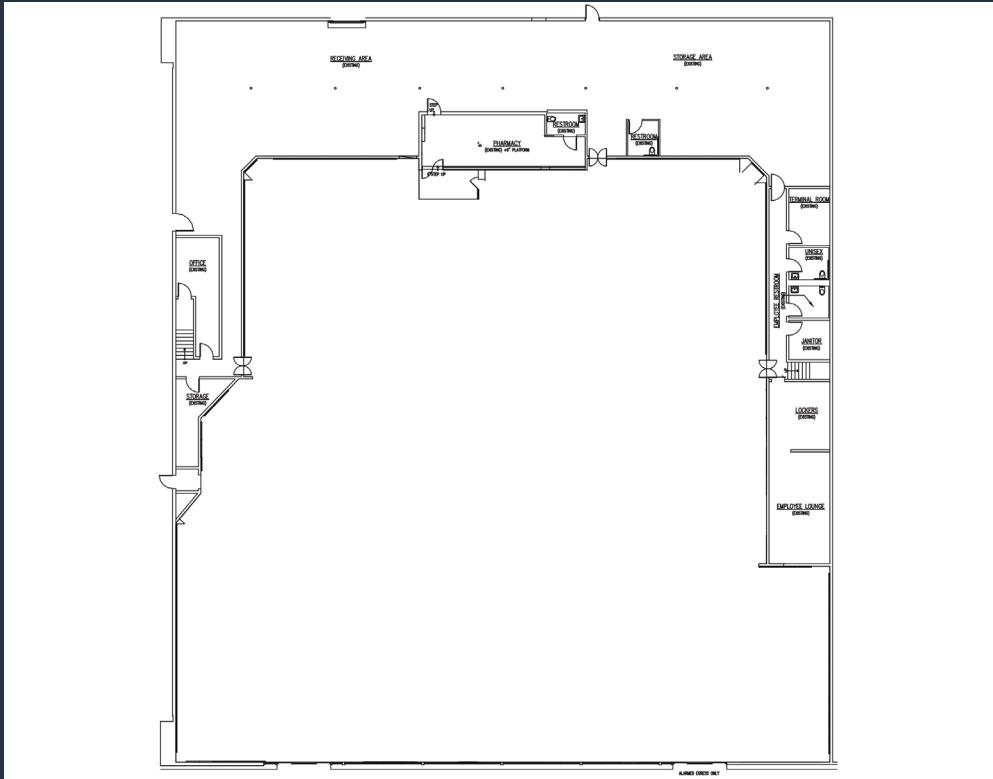
ANCHOR CO-TENANT: dd's Discount (#4 Store in the Bay Area)

[Link to data](#)

GENERAL PLAN: Neighborhood Community Commercial (NCC)

URBAN VILLAGE: Horizon 1 - Approved

ZONING: Commercial Neighborhood (CN) & Commercial Pedestrian (CP)



POPULATION

1 MILE	3 MILES	5 MILES
31,171	258,582	641,559



ESTIMATED HOUSEHOLDS

1 MILE	3 MILES	5 MILES
12,477	101,119	232,280



ESTIMATED AVERAGE HOUSEHOLD INCOME

1 MILE	3 MILES	5 MILES
\$166,184	\$202,573	\$208,205



ESTIMATED AVERAGE HOUSEHOLD NET WORTH

1 MILE	3 MILES	5 MILES
\$1.49 M	\$1.87 M	\$1.95 M



COLLEGE DEGREE BACHELOR DEGREE OR HIGHER

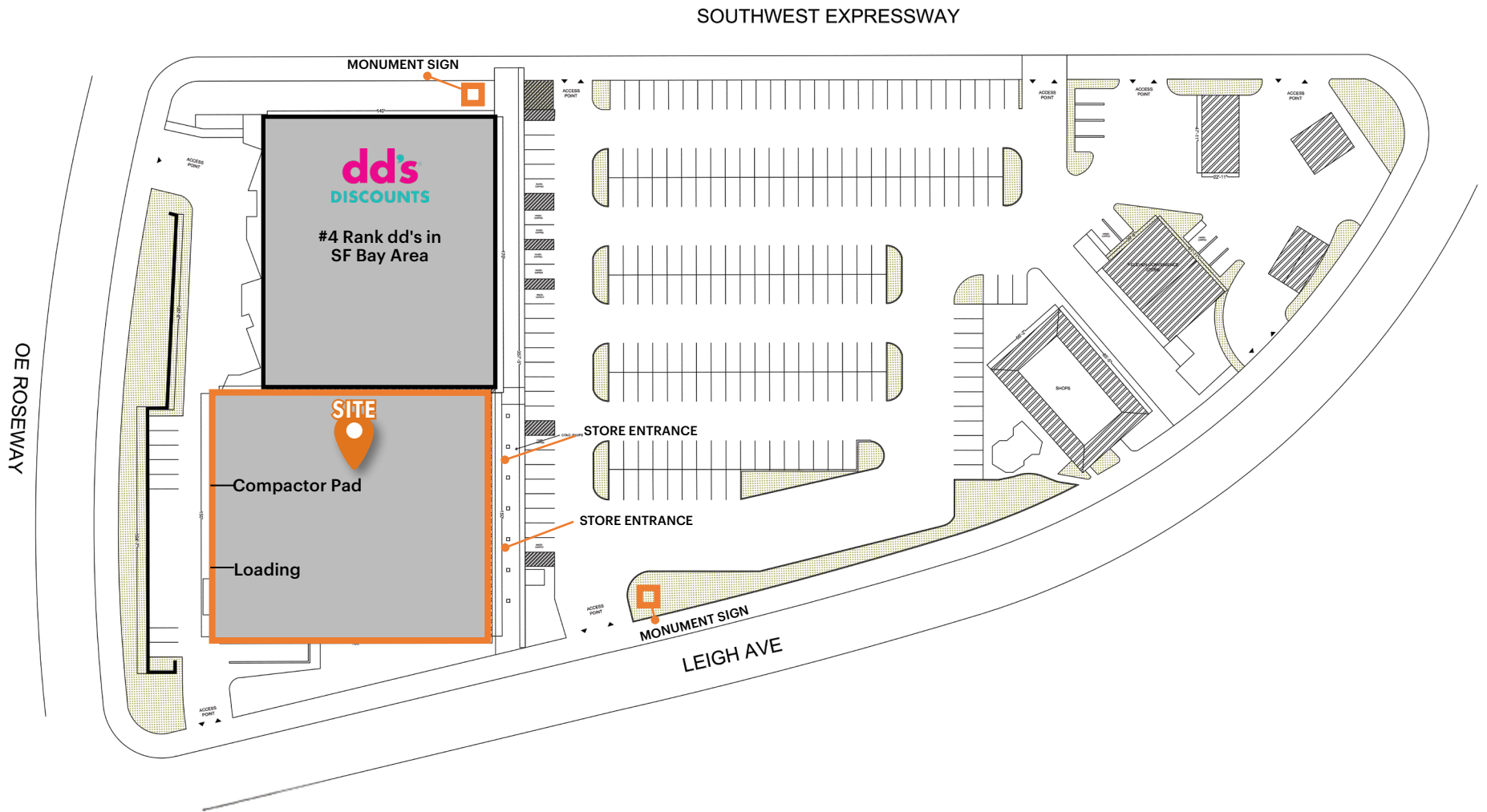
1 MILE	3 MILES	5 MILES
49.0%	53.2%	52.8%

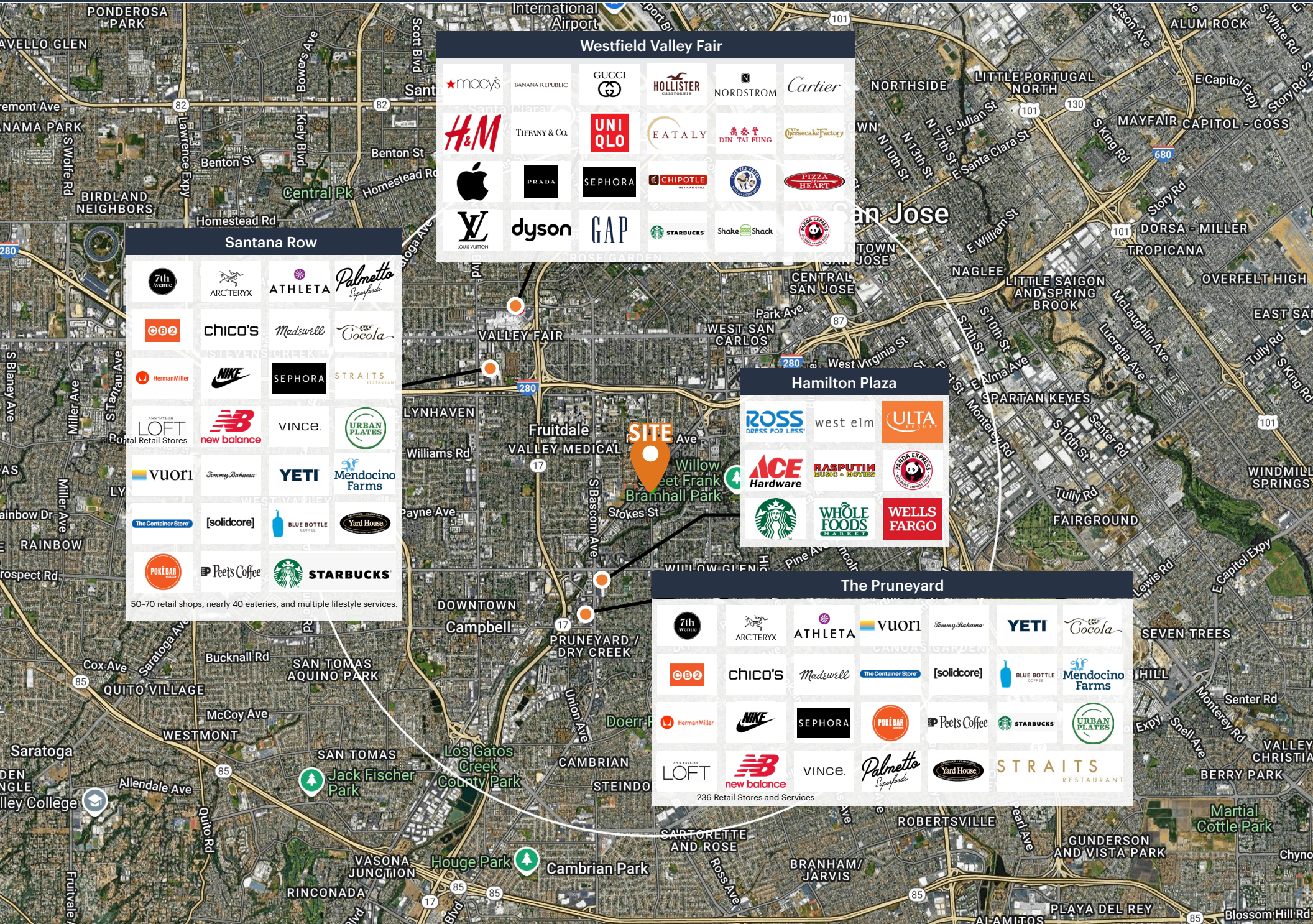


TOTAL RETAIL EXPENDITURES

1 MILE	3 MILES	5 MILES
\$734.33 M	\$6.33 B	\$14.98 B

*Demographics Source: Regis Site USA 08/19/25





Westfield Valley Fair

Santana Row

50-70 retail shops, nearly 40 eateries, and multiple lifestyle services.

Hamilton Plaza

The Pruneyard

236 Retail Stores and Services

1097 LEIGH AVE., SAN JOSE, CA 95126



JON WOODCOX | 925-788-3494
jon@lockehouse.com | License #01923630