

# FOR SALE

750 POST STREET, SAN FRANCISCO



**JON WOODCOX**  
LockeHouse Retail Group  
(925) 627-7903  
Jon@Lockehouse.com  
License #01923630

**KIM RYDER**  
Thrive Real Estate Group  
(602) 460-0743  
kim.ryder@thrivere.com

# OVERVIEW

## PROPERTY OVERVIEW

<b>Address:</b>	750 Post Street, San Francisco CA 94109
<b>County:</b>	San Francisco County
<b>Property Type:</b>	Office
<b>Price:</b>	\$8,500,000
<b>Price PSF:</b>	\$369/SF
<b>GLA:</b>	±23,000 SF
<b>Lot Area:</b>	±11,687 SF
<b>Built:</b>	1914
<b>Remodeled:</b>	2021
<b>Zoning:</b>	<a href="#">Zoning Classification</a>

## LOCATION OVERVIEW

750 Post Street is centrally located in San Francisco's Lower Nob Hill neighborhood, offering a strategic office location just steps from Union Square and the Downtown core. The property provides convenient access to the Financial District, SoMa, and key business corridors, making it well suited for professional services, creative firms, and boutique office users.

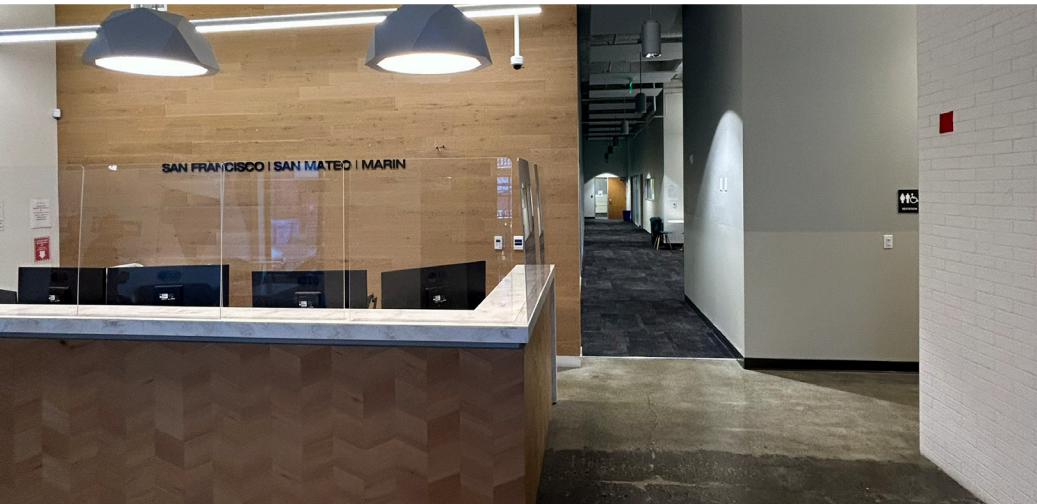
The surrounding area is supported by a dense mix of residential buildings, hotels, and neighborhood amenities, creating a strong live-work environment. Tenants benefit from proximity to restaurants, cafes, and retail, as well as access to multiple transit options including BART, Muni, and major bus lines.

Lower Nob Hill's central positioning and walkability continue to attract office users seeking an urban setting with flexibility and convenience. 750 Post Street offers a compelling opportunity for office occupancy within a well-established and accessible San Francisco submarket.

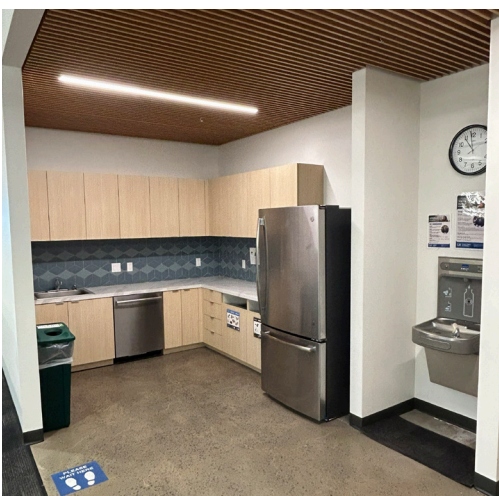
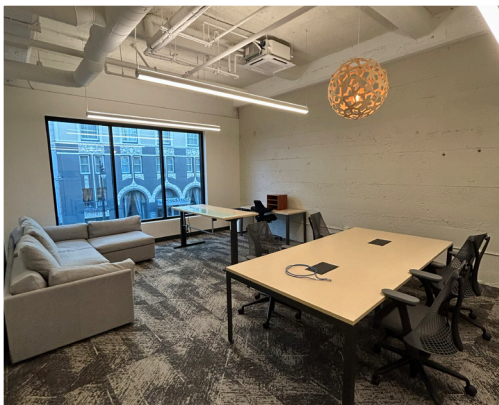


# OFFICE TOUR

## 1ST FLOOR



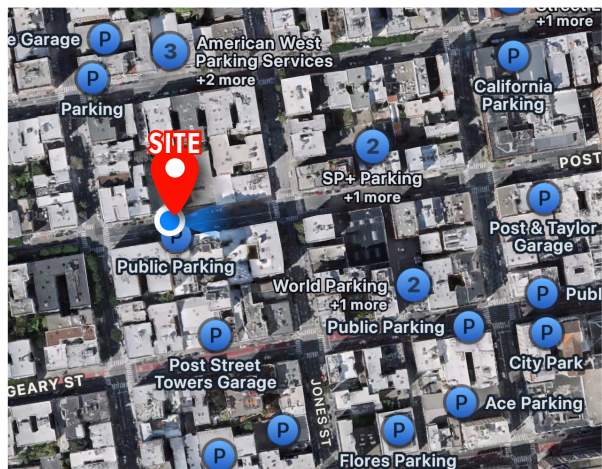
## 2ND FLOOR (Download Videos)

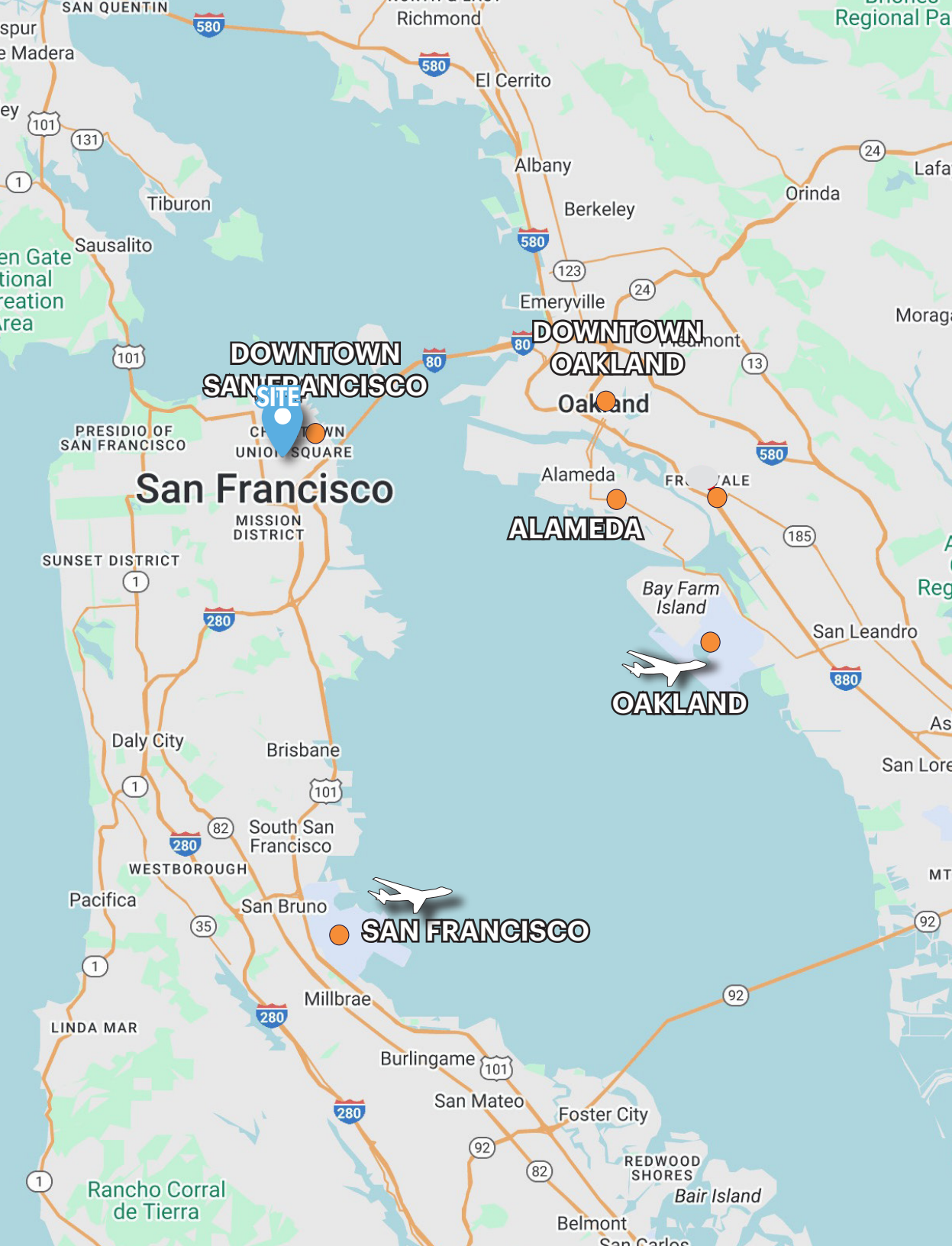


# LOCATION & PARKING MAP



## Parking in Area





## DRIVING DISTANCES | MILES

9TH STREET BART	1.2
CALTRANS	1.6
SAN FRANCISCO AIRPORT	12.8
DOWNTOWN SAN FRANCISCO	1.1
DOWNTOWN OAKLAND	11.4
OAKLAND AIRPORT	18.9

**San Francisco** is a globally recognized hub for innovation, finance, and culture. As the core of the Bay Area, the city benefits from a deep talent pool, strong capital presence, and close ties to Silicon Valley.

The market features a diverse mix of office, retail, and mixed-use opportunities across key districts including the Financial District, SoMa, Mission Bay, and Union Square. Each submarket offers distinct character and strategic value.

With its enduring economic fundamentals, iconic neighborhoods, and global influence, San Francisco remains a resilient and highly relevant market for long-term growth.



**LOCKEHOUSE**  
RETAIL GROUP

**JON WOODCOX**

Locke House Retail Group  
(925) 627-7903  
Jon@Lockehouse.com  
License #01923630



**THRIVE**  
Real Estate Group

**KIM RYDER**

Thrive Real Estate Group  
(602) 460-0743  
kim.ryder@thrivere.com